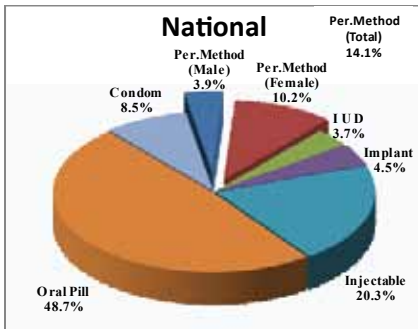


দুটি সন্তানের বেশী নয়
একটি হলে ভাল হয়

REPORT

November 2015

Method-Mix for the month of November 2015



FAMILY PLANNING, MATERNAL & CHILD HEALTH AND REPRODUCTIVE HEALTH SERVICES



Management Information System (MIS) Services and Personnel (FP)
Directorate General of Family Planning
6 Kawran Bazar, Dhaka - 1215



Government of the People's Republic of Bangladesh
Management Information Systems (MIS)
Directorate General of Family Planning
6 Kawran Bazar, Dhaka-1215
www.dgfpbd.org

No. DGFP/MIS/2004/35/48

Date: 26.01.2016

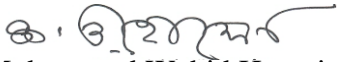
Secretary
Ministry of Health & Family Welfare
Bangladesh Secretariat, Dhaka.

Sub: Monthly Progress Report on Performance of Family Planning, MCH and Reproductive Health Services

Sir,

Progress Report on Performance of Family Planning, Maternal & Child Health and Reproductive Health Services for the month of November 2015 is submitted herewith for your kind information.

Yours obediently,



Mohammad Wahid Hossain
Director General

Directorate General of Family Planning
Phone: 9118903

No. DGFP/MIS/2004/ 35/48/1 (210)

Date: 26.01.2016

Distribution (A):

1. Principal Secretary to the Honorable Prime Minister, Prime Minister's Office, Tejgaon, Dhaka.
2. Secretary, Finance Division, Ministry of Finance, Bangladesh Secretariat, Dhaka.
3. Secretary, Ministry of Planning, Planning Commission, Sher-e-Bangla Nagar, Dhaka.
4. Member, SEI Division, Planning Commission, Sher-e-Bangla Nagar, Dhaka.
5. P. S. to the Honorable Prime Minister, Prime Minister's Office, Tejgaon, Dhaka.
6. Additional Secretary, Ministry of Health & Family Welfare, Bangladesh Secretariat, Dhaka.
7. Divisional Commissioner, _____ Division.
8. Joint Secretary (FW & Programme), Ministry of Health and Family Welfare, Bangladesh Secretariat, Dhaka.
9. Joint Chief, Population Wing, Planning Commission, Sher-e-Bangla Nagar, Dhaka.
10. Joint Chief (Planning), Ministry of Health and Family Welfare, Bangladesh Secretariat (Clinic Building), Dhaka.
11. Joint Chief (Planning), Monitoring and Evaluation Unit, Ministry of Health and Family Welfare, Janashakhya Bhaban, Azimpur, Dhaka.
12. Deputy Commissioner, _____ District.
13. P. S. to the Honorable Minister, Ministry of Planning, Sher-e-Bangla Nagar, Dhaka for kind information of the Honorable Minister.
14. P. S. to the Honorable Minister, Ministry of Health & Family Welfare, Bangladesh Secretariat, Dhaka, for kind information of the Honorable Minister.
15. P. S. to the Honorable State Minister, Ministry of Health & Family Welfare, Bangladesh Secretariat, Dhaka, for kind information of the Honorable State Minister.
16. Deputy Secretary (Development), Statistics Wing, Planning Division, Ministry of Planning, Sher-e-Bangla Nagar, Dhaka.

Distribution (B):

17. Director General, Health Services, Mohakhali, Dhaka.
18. Director General, Medical Services, Ministry of Defense, Dhaka Cantonment, Dhaka.
19. Director General, NIPORT, Azimpur, Dhaka.
20. Director (Administration/Finance/Logistics & Supply/Planning/Audit), Directorate General of Family Planning, 6 Kawran Bazar, Dhaka-1215.
21. Director (MCH-S), Directorate General of Family Planning, 6 Kawran Bazar, Dhaka-1215.
22. Line Director (CCSDP), Directorate General of Family Planning, 6 Kawran Bazar, Dhaka-1215.
23. Director (IEM) with a request for taking necessary measures for publication of the report in the newspaper and other Media (Paper, Radio & T.Vs) 6 Kawran Bazar, Dhaka-1215.
24. Divisional Director, Family Planning, Dhaka/Chittagong/ Khulna/ Rajshahi/ Barisal/ Sylhet Division.

25. Superintendent, MCHTI, Azimpur, Dhaka/Director MFSTC-Mohammadpur, Dhaka.
26. Additional Director, Central Ware House, Family Planning, Mohakhali, Dhaka.
27. Deputy Director, Family Planning _____ District.
28. Librarian, Ministry of Health and Family Welfare, Bangladesh Secretariat, Dhaka.
29. P.A to Director General, Directorate General of Family Planning, 6 Kawran Bazar, Dhaka-1215.
30. Documentation Centre, IEM Unit, DGFP, 6 Kawran Bazar, Dhaka-1215.

Distribution (C):

1. Mr. Peter Herzig, Health Advisor and Chairperson, HNP Consortium, European Commission. House-7, Road – 84, Gulshan-2, Dhaka.
2. Task Team Leader, Health and Population Program Project, World Bank, E-32, Agargaon, Sher-e-Bangla Nagar, Dhaka-1207.
3. Chief, Population & Health, USAID (US Embassy), Madani Avenue, Gulshan-2, Dhaka.
4. Representative, UNFPA, IDB Bhaban, E/8 Begum Rokeya Sharani, Sher-e-Bangla Nagar, Dhaka-1207.
5. Representative, WHO, House No-12, Road No. 7, Dhanmondi R/A, Dhaka.
6. Representative, UNICEF, 1 No. Mintu Road, Extension Building (Hotel Sheraton), Dhaka
7. Representative, Population Council, House No. CES(B)-21, Road 118, Gulshan, Dhaka.
8. Director General, FPAB, 2, Naya Paltan, Dhaka.
9. Director, ICDDR'B, Mohakhali, Dhaka-1212
10. Executive Director, BAVS, 7/5, Main Road, Mirpur-2, Dhaka.
11. Managing Director, Social Marketing Company (SMC), SMC Tower (6th, 7th & 8th floor) 33, Banani C/A, Dhaka-1213.
12. Executive Director, PSTC, New Circular Road, Dhaka.
13. Country Director, SPS/MSH, House No. 28, Flat W2, Road No. 63, Gulshan-2, Dhaka-1212.
14. Country Representative, Engender Health, House No. 40 (New), Road No. 16(New)/27 (Old), Concord Royal Court (5th floor), Dhanmondi R/A., Dhaka.
15. Communication/Documentation Officer, Population Council, House # CES(B) 21, Road # 118, Gulshan, Dhaka.



26/01/2016
(A K M Mahbubur Rahman Joarder)

Director (MIS)

&

Line Director (MIS-FP)

Phone : 9146262 ; E-mail : dirmisfp@gmail.com

Table of Contents

Contents	Page No.
Summary of FP Performance.....	03
Summary of the MCH & RH Services	04
Introduction	05
Family Planning Performance (CAR related)	05
MCH Performance	05
Highlights November 2015	06
Table Analysis	07
Remarks	09
Clarification about some information	10
Highest and Lowest performing districts in clinical methods.....	10
Table: 01 National Projection, Performance and Achievement Rate of Contraceptive Methods	11
Table: 02 List of Divisions according to descending order of Achievement Rate against their projections of Clinical Methods for the period of July to November 2015	11
Table: 03 List of Districts achieved the highest Achievement Rate of Clinical Method against their projections for the period of July to November 2015	11
Table: 04 List of Districts achieved the lowest Achievement Rate of Clinical Methods against their projections for the period of July to November 2015	11
Table: 05 Comparative Statement of contraceptive performance for the period between July to October 2014 and July to November 2015	12
Table: 06 Performance & Distribution of Contraceptives by Method for the month of October and November 2015	12
Table: 07 Contribution of Government, NGOs and Multisector in respect of Contraceptive Performance during November 2015.....	12
Table: 08 NGO and Multisector wise Contraceptive Performance for the month of November 2015.....	13
Table: 09 District wise Projection, Performance and Achievement Rate of Permanent and Long Acting Methods	16
Table: 10 District wise Projection, Performance and Achievement Rate of Short Acting Methods.....	18
Table: 11 Old Users, New Users, Dropout and CAR by District at the end of November 2015.....	20
Table: 12 Number of New and Total Acceptors upto the end of October and November 2015.....	24
Table: 13 CAR (%) by Division upto the end of October and November 2015	24
Table: 14 District by Range of CAR upto the end of November 2015.....	25
Table: 15 List of Upazila achieved CAR 70% & above upto the end of November 2015	26
Table: 16 List of Upazila achieved CAR 60-69% & upto the end of November 2015	29
Table: 17 List of Upazila achieved CAR 0 to 59% upto the end of November 2015.....	29
Table: 18 Method wise Number of Dropout and Switch Over by Division upto the end of October 2015	30
Table: 19 Contraceptive Acceptors and Acceptance Rate by Division up to the end of October & November 2015.....	30
Table: 20 Status of Contraceptive Method-Mix based on CAR at the end of the Month of November 2015	30
Chart: Pie chart of Method-Mix for the month of November 2015.....	31
Table: 21 Performance by type of MCH services for the month of October and November 2015	32
Annex: A Summary of the Couples and Acceptors by Month since June 2015	33
Annex: B Performance of RH-EOC of MCWCs, MCHTI & MFSTC for the month of November 2015	35
Annex: C City Corporation wise Contraceptive Performance for the month of November 2015	37
Annex: D City Corporation wise Contraceptive Acceptors & CAR (Partial) end of the month of November 2015.....	37
Annex: E City Corporation wise MCH Performance for the month of November 2015.....	38

**Summary of the FP Performance for the Month of
October & November 2015**

Indicators		October 2015	November 2015
Number of Total Eligible Couples (Part of the City Corporations)	:	27074640	27095276
Number of Total Acceptors (Part of the City Corporations)	:	21410431	21487353
CAR (Contraceptive Acceptance Rate)	:	79.1	79.3
Method Specific acceptors (Cumulative) :			
Permanent Method (Male)	:	836654	839921
Permanent Method (Female)	:	2193507	2199481
Permanent Method (Total)	:	3030161	3039402
IUD (Users)	:	796017	803798
Implant (Users)	:	952375	973429
Injectable (Users)	:	4357979	4371073
Oral Pill (acceptors)	:	10451697	10465501
Condom (acceptors)	:	1822202	1834150
Method Specific new acceptors :			
Permanent Method (Male)	:	4382	5409
Permanent Method (Female)	:	9713	11390
Permanent Method (Total)	:	14095	16799
IUD (Users)	:	10767	22630
Implant (Users)	:	24849	38715
Injectable (Users)	:	70615	92548
Oral Pill (acceptors)	:	126751	158598
Condom (acceptors)	:	45343	66047
Number of Districts reported	:	64	64
Number of Upazilas reported	:	488	488
Range of CAR (%)		No. of Districts	
		October 2015	November 2015
00 – 59	:	0	0
60 – 69	:	0	0
70 & above	:	64	64
Contraceptive Performance and distribution by methods (Absolute Performance) :			
Permanent Method (Male-cases)	:	6634	8023
Permanent Method (Female-cases)	:	9814	11539
Permanent Method (Total-cases)	:	16448	19562
IUD (Nos.)	:	16393	33841
Implant (Nos.)	:	32542	49957
Injectable (Doses)	:	1110540	1167668
Oral Pill (Cycles)	:	8460682	8579372
Condom (Pieces)	:	11771613	12439740

Summary of the MCH and Reproductive Health Services for the Month of October & November 2015

Services	October 2015	November 2015
Number of Pregnant Women (Registered by FWA)	841208	840042
Ref. High Risk Pregnant Mother	11787	13419
Antenatal Care		
1st visit	204637	204627
2nd visit	139657	142975
3rd or more visits(including MCHTI, MFSTC & FWVTI)	146151	146694
Delivery (conducted in MCHTI, MFSTC, FWVTI, MCWC, UHC, UH&FWC)	32354	31770
Caesarian operations (MCHTI, MFSTC, FWVTI MCWC, FP & NGO Clinics)	5994	5829
Postnatal Care (MCHTI, MFSTC, FWVTI, MCWC, UHC, UH&FWC)	145141	149483
Referred Sterile Couple	7901	9247
Attacked by Anemia	119430	125509
Referred for Anemia	8887	8940
Attacked by Iodine Deficiency	10468	10859
Referred for Iodine Deficiency	3872	4343
Attacked by Dys-menorrhoea	41917	42682
Referred for Dys-menorrhoea	5914	6026
Attacked by RTI/STI (Boys)	46005	49400
Attacked by RTI/STI (Girls)	86629	92672
Referred for RTI/STI (Boys)	7594	8567
Referred for RTI/STI (Girls)	11037	13861
Treatment of RTI/STI (MCHTI, MFSTC, FWVTI & MCWCs)	3527	3124
TT for Women (15 - 49 yrs)		
1st dose	123893	125031
2nd dose	124125	123831
3rd dose	120154	120110
4th dose	110223	110239
5th dose	111401	109164
Total TT	589796	588375
Immunization		
Pentavalent 1st dose	170429	172306
Pentavalent 2nd dose	171891	173260
Pentavalent 3rd or more dose	169232	172528
BCG (Vaccine)	158062	155866
Measles (Vaccine)	193753	192397
Number of Children received services (including MCHTI, MFSTC & FWVTI)		
0-<1 yr.	280492	286583
1 – 5 yrs.	547084	568736
General Treatment	2889249	2872505
Number of ECP acceptors	3720	4149
Number of MR done (Both Govt. & NGOs)	16877	16745
Birth : (Live Births+ Still Births) = Total Delivery	121472	123416
Live Births (Home) by Trained Persons (collected by FWA)	60255	60516
Live Births (Home) by Non-trained Persons(collected by FWA)	16976	17236
Live Births (Clinics) (collected by FWA, conducted) *	44017	45459
Total Birth :	121248	123211
Still Births (including MCHTI, MFSTC & FWVTI)	224	205
Death :		
Neonatal deaths(0-28 days)	697	636
Infant Deaths (29 days-<1 yr.)	179	207
Child Deaths (1-<5 yrs.)	334	280
Maternal Deaths	75	79
Other Deaths	23632	26205
Total Death :	24918	27407

* Live births (Clinic) conducted at MCH, DH, MCWC, UHC, UH&FWC, NGO & Private clinics.

SUMMARY

Introduction

Management Information System (MIS) has been operational under the Directorate General of Family Planning (DGFP) for a long time. Contraceptive Performance, MCH and Reproductive Health service's report are used to be published each month from MIS Unit on the basis of Service Statistics received from the field workers, service delivery clinics and NGOs. Erstwhile Family Welfare Register, however, is the principal source of performance statistics. This report is prepared on the basis of FWA Registers (7th generation). There is a reporting system to collect the information from the field. MIS Reporting Form No. 1 is filled up by the FWA and submitted the same to FPI. FPI fills up the MIS reporting Form-2 by compiling of all the FWAs (Form-1) report and submits to UFPO office. MIS reporting Form-3 (clinical) is filled up by MO (clinic)/ (MCH-FP)/ (FW)/ SACMO/ FWV and is submitted to UFPO office. NGOs of the respective area submit their report to UFPO office through MIS reporting Form-2 and 3 as their requirement. All the reporting Form-2 and 3 are compiled by UFPO office and filled up reporting Form-4 and is entered in Web Based Software (SS). District FP Office review and Submit that report. It provides information of contraceptive use status of eligible couples and different types of MCH and Reproductive Health services. MIS performance report is primarily used by different level of program managers and supervisors engaged in implementing the Family Planning and MCH & RH program in the country. Besides, different policy makers, decision makers, donor agencies, Development Partners, researchers and other users also use this report.

Family Planning Performance (CAR related):

Performance reports of Nov'15 have been received from all the 64 districts of the country. During the month of Nov'15 total numbers of eligible couples were found to be 27095276 as against 27074640 couples in the previous month. Performances of NGOs are also included in the report as reported by the Upazila Offices. A total of 21487353 acceptors are reported in the month of Nov'15 as against 21410431 acceptors reported in Oct'15. The Contraceptive Acceptance Rate (CAR) achieved at the end of the reporting month for six modern methods (Permanent Method, IUD, Injectables, Oral Pill, Condom and Implant) is 79.3 which was 79.1 in Oct'15. Method Specific Acceptors (Cumulative), Method Specific New Acceptors and Contraceptive distribution by Methods are shown in the summary sheet.

It may be noted that the contraceptive acceptance rate is an estimate, based on the client contact and the status of contraceptive acceptance as reported by the field workers based on the entries made in the register. The Contraceptive Prevalence Rate (CPR), on the other hand, is based on periodic surveys that are made on precise statistical procedures. The acceptance rate is a tentative rate and varies from month to month because of reporting status and coverage. This rate is usually higher than the Contraceptive Prevalence Rate (CPR). CAR is generally used to monitor as a management tool on 'on-going' program performance in the country. It is not so much used to evaluate the programme impact or goals, which is done by periodical scientific surveys.

MCH Performance:

In the month of November'15, 840042 pregnant women have been registered. 13419 Pregnant Mother referred to hospital for their complications. Referred for treatment of adolescent boys and girls of RTI/STI are found to be 8567 and 13861 respectively. 588375 Nos. of Mother TT Injections (total of 1st to 5th dose) were given to the women aged 15 to 49 years during November'15 but in the previous month

(October'15) 589796 women were reported to have received TT shots. Dose wise DPT vaccines were shown in the summary sheet. BCG vaccines were given to 155866 infants and 192397 infants received Measles vaccines during November'15. Number of Child-care (0-5 yrs.) is 855319 during the month of November'15 as against 827576 in October'15. Visit wise Antenatal Care are also shown in the summary sheet both of October'15 and November'15. In the reporting month the number of Postnatal Care is 149483 and number of delivery conducted by the clinics is 31770. The number of Newborn babies delivered at home are reported to be 60516 by trained personnel and 17236 by non-trained personnel. A total number of 45459 Newborn babies were delivered at the clinics in November'15 (information collected by the field workers). Still Birth is recorded 205 in November'15 and in the previous month it was 224. Neonatal deaths (0-28 days) & Infant deaths (29 days-1yr.) are recorded to be 636 and 207 in the month of November'15 where its were 697 and 179 in October'15 respectively. A total of 280 child-deaths (1-5 yrs.) have been reported in the month of November'15 as against 334 in October'15. Maternal deaths were reported 79 during the month of November'15 which was 75 in October'15. 26205 Other deaths were reported to have occurred in November'15 but in October'15 the number of such deaths were reported to be 23632. General treatments were rendered to 2872505 and 2889249 patients in the month of November'15 and October'15 respectively. In November'15 Number of ECP acceptors are 4149 but in October'15 it was 3720. MR done in November'15 is 16745 but in October'15 it was 16877 Performance done by MCHTI, MFSTC & MCWCs is also included in the report.

Highlights November 2015

- a) National Contraceptive Acceptance Rate (CAR), based on 27095276 Couples visited, is found to be 79.3% percent. Rajshahi division had achieved the highest acceptance rate 81.5%, followed by Khulna division 80.9%. The CAR is found to be 80.2% achieved in Rangpur division. The rate of Contraceptive Acceptance rate have been found to be rather low in Barisal 79.1, Dhaka 78.8, Sylhet 78.3%, and Chittagong 76.9% compared to other three divisions.
- b) The highest number of Acceptors 6074162 have been reported from Dhaka division followed by 3742612 in Chittagong division, Rajshahi division reported 3417919 acceptors respectively. Acceptors size is however, found much smaller in Rangpur, Khulna, Barisal, which are 2881596, 2823430, 1292333 and in Sylhet division it is 1255301 because these are the smaller divisions than that of other four.
- c) Out of 64 reporting districts, all districts have reported acceptance rate of 70 percent and above, no district has reported CAR of 60 - 69 percent and no district have reported CAR of 0 – 59.
- d) Out of 488 Upazila 486 have reported CAR at the level 70% and above, 1 Upazila has reported CAR level 60-69 percent and 1 Upazila has reported CAR level 0-59 percent.
- e) In case of performance done in the reporting month (November'15), Bandarban district recorded the highest Achievement Rate 115.3, Khulna has got the 2nd place with 114.9 and Dhaka district has occupied the 3rd position with 104.0 of permanent method. Bandarban district has shown Achievement Rate 302.2.2 in IUD which is the first position among the other districts and Bagerhat has got the 2nd place with 279.7. Tangail district has recorded the highest Achievement Rate 212.0 in Implant. Bhola district has recorded the highest Achievement Rate of 177.9, Cox's Bazar placed in 2nd position with 123.5 and Dhaka district has occupied the 3rd position with Achievement Rate 119.0 in Injectable, Netrokona district has recorded the highest Achievement Rate 90.5 in Oral Pill and Dhaka district has recorded the highest Achievement Rate 130.7 in Condom.
- f) SMC has reported distribution of 3079512 cycles of oral pill, 8732278 pieces of condom and 117999 vial Injectable in November'15.

- g) Thakurgaon MCWC have performed highest 49 Caesarian Operations, Gaibandha MCWC has performed highest of 311 deliveries. MCHTI, Azimpur has performed 261 Caesarian Operations & 132 deliveries in the reporting month November'15. Joypurhat, Nilphamari, Lalmonirhat, Netrokona, Magura, Meherpur, Satkhira, Kumarkhali (Kustia), Gournadi (Barisal), Lalmohon (Bhola), Barguna, Cox's Bazar, Bandarban, B. Baria, Noakhali, Begumganj (Noakhali), Pauchuria (Patiya) and Sylhet MCWCs have not done any Caesarian Operations. It may be due to the vacancies of trained EOC doctors in those centers or Extension Works. Director (MCH-S) & Line Director (MC&RH) should immediately look into the matter.

Table Analysis:

- Table 1:** Shows contraceptive performance in respect of Permanent, Long Acting and Short Acting methods for the reporting month (November'15) against their respective projections. In the reporting month the achievement rates of Permanent methods (Male) are 44.7%, Permanent methods (Female) 62.9% Permanent methods (Total) 53.9%, IUD 119.5%, Implant 142.1%, Injectables 76.5%, Oral Pill 60.7% and Condom 61.6. In the reporting period (Jul'15 to Nov'15) the achievement rates of Permanent methods (Male) are 37.3%, Permanent methods (Female) 50.0% Permanent methods (Total) 43.7%, IUD 69.3%, Implant 87.6%, Injectables 73.3%, Oral Pill 60.5% and Condom 58.5.
- Table 2:** Shows the divisions according to descending order of achievement rate against their projection of Permanent and Long Acting methods for the period Jul'15 to Nov'15.
- Table 3:** Showing the 3 (three) districts achieved the highest achievement rate against Permanent and Long Acting methods of their projections for the period Jul'15 to Nov'15.
- Table 4:** Shows the districts achieved the lowest achievement rate of Permanent and Long Acting methods against their projections for the period Jul'15 to Nov'15.
- Table 5:** Statement of contraceptive performance between the period Jul'14 to Nov'14 and Jul'15 to Nov'15. The Achievement Rate of Permanent Method (Male) was 43.7% in the period Jul'14 to Nov'14 but it shows the lower rate 37.3% in the current period. So it is 6.4% decrease than that of Jul'14 to Nov'14, Permanent Method (Female) was 51.7% in the period Jul'14 to Nov'14 but it shows the lower rate 50.0% in the current period. So it is 1.6% decrease than that of Jul'14 to Nov'14. Permanent Method (Total) was 47.7% in the period Jul'14 to Nov'14 but it shows the lower rate 43.7% in the current period. So it is 4.0% decrease than that of Jul'14 to Nov'14. IUD achieved the 69.3% in the reporting period but in Jul'14 to Nov'14 it achieved 68.3%. So in case of IUD 1.0% increase in the reporting period. Implant achieved the 87.6% in the reporting period but in Jul'14 to Nov'14 it shows 89.4%, in that case Implant has shown 1.8% decrease in the reporting period. Injectable achieved the 73.3% in the current period but in the period Jul'14 to Nov'14 it shown 76.2%. Injectable has shown 2.9% decrease than that of Jul'14 to Nov'14. Oral Pill achieved the 60.5% in the present period but in the period Jul'14 Nov'14 it was 63.4%. Oral Pill decrease 2.9% than that of Jul'14 to Nov'14. In case of Condom it achieved 58.5% in the current period but in Jul'14 to Nov'14 it shown 61.8%. Which is 3.3% decrease than that of Jul'14 to Nov'14.
- Table 6:** Shows the status of Contraceptive Performance reported this reporting month for Clinical and Non-Clinical Methods based on field worker's report. In comparison with that of previous month Permanent Method (male) 20.9%, Permanent Method (female) 17.6%, Overall Permanent Method (total) 18.9%, IUD 106.4%, Implant 53.5%, Injectable 5.1%, Oral Pill 1.4% and Condom 5.7% higher than that of October'15.
- Table 7:** Shows the share of Government and NGOs and Multisector by methods in the overall National performance. Government sector has contributed 70.9 percent in Permanent Method (Male), 92.8 percent in Permanent Method (Female), 83.8 percent in Permanent Method (Total), 89.0 percent in IUD, 89.1 percent in Implant, 80.8 percent in Injectable, 84.8 percent in Oral Pill and 71.4 percent in Condom. On the other hand NGOs and Multisector have

contributed 29.1 percent in Permanent Method (Male), 7.2 percent in Permanent Method (Female), 16.2 percent in Permanent Method (Total), in IUD 11.0 percent, in Implant 10.9 percent, in Injectable 19.2 percent, in Oral Pill 15.2 and in Condom 28.6 percent in the reporting month November'15.

Table 8: Division wise Contraceptive Performance by methods of NGOs and Multisector (November'15) are shown in this table BAVS of Dhaka division is in the highest position, Marie Stopes Clinic of Dhaka division is in the next and Marie Stopes Clinic of Rajshahi division is in the 3rd position in Permanent method. By NGOs and Multisector performance of Total Permanent methods are 3243 in the reporting month, in which Males are 2337 and Females are 827. Total IUD and Implant 3723 and 5429 are inserted in the reporting month November'15. Injectable 223791 vials, Oral Pill 1301352 cycles and 3557862 pieces of Condom are distributed by NGOs and Multisector in this month.

Table 9: Shows the projection, performance and achievement rates of Permanent, and Long Acting methods in the reporting month November'15. In reporting month Bandarban district has achieved the highest achievement rate of 115.3 percent and Khulna is the next highest with 114.9 percent in Permanent Method. Bandarban has achieved the highest achievement rate of 302.2 percent in IUD and Tangail achieved the highest achievement rate of 212.0 percent in Implant. And in the reporting period Jul'15 to Nov'15, Dhaka district has achieved the highest achievement rate of 96.2 percent and Khulna is the next highest with 90.5 percent in Permanent Method. Bandarban has achieved the highest achievement rate of 139.2 percent in IUD and Thakurgaon has achieved the highest achievement rate of 143.2 percent in Implant.

Table 10: Shows the projection, performance and achievement rates of Short Acting methods in the reporting month November'15. In reporting month Bhola district has achieved the highest achievement rate of 177.9 percent and Cox's Bazar is the next highest with 123.5 percent in Injectables. Netrokona district have achieved the highest achievement rate of 90.5 percent in Oral Pill. Dhaka district has achieved the highest achievement rate of 130.7 percent in Condom. In the reporting period Jul'15 to Nov'15 Bhola district has achieved the highest achievement rate of 179.1 percent and Cox's Bazar is the next highest with 115.1 percent in Injectable. Mymensingh has achieved the highest achievement rate of 89.0 percent in Oral Pill and Dhaka has achieved the highest achievement rate of 116.4 percent in Condom.

Table 11: This table shows the Old acceptors, New acceptors and dropout (No method & switch over) cases by districts in the reporting month (November'15). This table is prepared on the basis of CAR report.

Table 12: Shows the new and total acceptors of the current month in comparison with that of the previous month. In case of total acceptors all the methods, Permanent Method (Male), Permanent Method (Female), Permanent Method (Total), IUD, Implant, Injectables, Oral Pill and Condom have shown increasing trend. In case of new acceptors all the methods Permanent Method (Male), Permanent Method (Female), Permanent Method (Total), IUD, Implant, Injectables, Oral Pill and Condom have also shown increasing trend. New acceptors are shown depending on the field workers report which collects from their visiting areas.

Table 13: This table shows that among the divisions. Rajshahi had recorded the highest CAR of 81.5%, next Khulna division 80.9%, Rangpur 80.2, Barisal division 79.1%, Dhaka division 78.8%, Sylhet division 78.3%, and Chittagong division 76.9% in the reporting month November'15. A Bar Graph is showing the division wise CAR for the current month. A Bar Graph is showing the division wise CAR for the current month in comparison with that of previous month.

Table 14: Shows that 64 districts have achieved CAR level of 70 percent and above where no districts have achieved CAR between 60-69 percent and no districts have achieved CAR between 0-59 percent in the reporting month November'15.

A bar graph is also showing the same in comparison with previous month.

- Table 15:** List of 486 Upazila among the 488, which have achieved CAR 70.0% and above in the reporting month.
- Table 16:** List of 1 Upazila which has achieved 60-69% CAR in the reporting month. 1 Upazila has achieved 0-59% CAR in the reporting month.
- Table 17:** Graph shows that out of 488 Upazila 486 achieved CAR level 70% and above, 1 Upazila achieved CAR level 60-69 percent and 1 Upazila that achieved CAR level 0-59 percent in the current month. There are also showing graphical presentation both of October'15 and November'15.
- Table 18:** Shows the number of dropouts and switch over by method and by division for the month of November'15.
- Table 19:** This table shows the Division-wise comparison of Couples, Contraceptive Acceptors and the Acceptance Rate up to the end of October'15 and November'15. In the reporting month the highest number of Eligible Couples have been reported from Dhaka division, which is 7712720, 2nd highest is Chittagong division, which is 4868170, then, Rajshahi, Rangpur, Khulna, Barisal and Sylhet division, which are 4191979, 3593934, 3491262, 1633348 and 1603863 respectively. In case of acceptors Dhaka division has been reported the highest number, which is 6074162 followed by Chittagong division 3742612, Rajshahi division 3417919, Rangpur division 2881596, Khulna division 2823430, Barisal division 1292333 and Sylhet division 1255301.
- Table 20:** Shows the contraceptive method mix by division for the month of November'15. Rangpur division has contributed the highest rate in Permanent Method 17.1% among its CAR method mix followed by Khulna division 16.4% then Sylhet 15.8% and Rajshahi 15.1%. Sylhet division has recorded 5.2% in IUD which is highest among the other divisions followed by Chittagong 4.8% and Barisal 4.3%. Barisal division has contributed the highest rate in Implant 6.0%, followed by Dhaka division with 4.7, Barisal division has also contributed the highest rate in Injectable 28.3% then Chittagong 23.1% and then Rangpur 22.3% in CAR method mix among all the divisions. Dhaka division has recorded the highest rate in Oral Pill 51.1% followed by Rajshahi 49.6%, Rangpur 48.5%. Sylhet division has recorded the highest rate in Condom 10.3% followed by remaining 3 divisions Rajshahi, Dhaka and Khulna which are 9.7%, 9.3% and 9.2% respectively.
- Pie Charts are showing the division wise Method-Mix for current month.
- Table 21:** This table shows the performance of MCH and Reproductive Health Services during the month of October'15 and November'15.
- Annex A:** Annex A shows comparative summary key performances since June 2015.
- Annex B:** Performance of RH-EOC of MCWC including MCHTI & MFSTC for the month of November'15.
- Annex C:** Performance of Part of the City Corporation Area for the month of November 2015 (partial)..
- Annex D:** City Corporation wise Contraceptive Acceptors and Acceptance Rate (CAR) end of the month of November 2015 (partial).
- Annex E:** City Corporation wise MCH Performance for the month of November 2015 (partial).
- Remarks**
- **The achievement of Rangpur division is good against their projection in permanent method in the reporting month November'15 in comparison with that of other divisions.**

Clarification about the information of summary sheet, table-2 and table-3:

Method Specific Acceptors:

In the summary sheet, Method Specific Acceptors is shown based on the field workers (FWA) visit of the reporting month and also the previous month. These are the cumulative figure which includes previous month's acceptors and reporting month's new acceptors collected by the field workers within their working areas.

Contraceptive distribution by Method:

In the summary sheet, Contraceptive Performance by Method is prepared based on the performance and distribution of the reporting month. These figures are actual performance of the reporting month which is not comparable with the information written in method specific acceptors.

Table- 9, Table-10 and Table-11

Performance showing in the table-9 and 10 is the actual performance of the respective month but the new acceptors showing in the table-11 is may not be the performance done in the same month. It may happen that the new acceptor accepted method in the previous month but field worker shown that case in the next month due to their rounding schedule. So the performance of table-9, table-10 will not be the comparable with the new acceptor of table-11.

Clarification about the information of MCH and Reproductive Health Services:

- Information shown against 'delivery' which done in MCHTI, MFSTC, MCWCs, UHCs & UH&FWCs. This report is collected through the MIS reporting Form-3. So it is not the whole country's delivery records. This report is absolutely excluding the city corporations.
- Information shown against the 'live births (home)' based on field workers (FWA) report. Live births (clinic) are conducted at different types of clinic (MCH, DH, MCWCs, UHC, UH&FWC, NGO & Private clinics). Field workers visit their units monthly and they submit their report in every month.

Highest and Lowest performing districts in clinical methods

Highest performing districts in the month of November 2015

Permanent Method		IUD		Implant		Remarks
District	Ach. Rate	District	Ach. Rate	District	Ach. Rate	
Bandarban	115.3	Bandarban	302.2	Thakurgaon	181.2	
Khulna	114.9	Bagerhat	279.7	Jamalpur	149.0	
Dhaka	104.0	Kishoreganj	226.9	Bogra	142.9	

Lowest performing districts in the month of November 2015

Permanent Method		IUD		Implant		Remarks
District	Ach. Rate	District	Ach. Rate	District	Ach. Rate	
Sirajganj	14.1	Nawabganj	33.4	Nawabganj	47.4	
Bhola	19.1	Kushtia	35.5	Meherpur	54.4	
Laxmipur	22.2	Habiganj	37.2	Habiganj	62.7	

Congratulations:

We congratulate the districts for their better performance in clinical methods against projections. We hope the officers and staffs are involved with the activities will continue their better performance in future.

Unsatisfactory Performance:

We are sorry for their unsatisfactory low performance in clinical methods against projections. We hope the officers and staffs are involved with the activities will try to overcome from this type of unsatisfactory performance in future.

Table :1**National Projection, Performance and Achievement Rate of Contraceptive Methods**

Methods	Yearly Projection (2015-16)	Reporting Month		Jul'15 to Nov'15	
		Performance (in CYP)	Achi. Rate (%)	Performance (in CYP)	Achi. Rate(%)
Permanent Method (Male)	215241	8023	44.7	33460	37.3
Permanent Method (Female)	220155	11539	62.9	45899	50.0
Permanent Method (Total)	435396	19562	53.9	79359	43.7
IUD	339831	33841	119.5	98192	69.3
Implant	421939	49957	142.1	154068	87.6
Injectables	4580464	291917	76.5	1399264	73.3
Oral Pill	11316441	571958	60.7	2851715	60.5
Condom	1616634	82932	61.6	394021	58.5

Table :2**List of Divisions according to descending order of Achievement Rate against their projections of Clinical Methods for the period July to November 2015**

Sl. No.	Permanent Method (Cases)				IUD (Cases)				Implant (Cases)			
	Division	Yearly Projection	Performance	Achi. Rate (%)	Division	Yearly Projection	Performance	Achi. Rate (%)	Division	Yearly Projection	Performance	Achi. Rate (%)
1	Rangpur	50800	11754	55.5	Dhaka	99480	34378	82.9	Rangpur	67610	27244	96.7
2	Dhaka	133571	28147	50.6	Chittagong	63215	19523	74.1	Dhaka	118589	46272	93.6
3	Sylhet	30283	5896	46.7	Barisal	23016	6682	69.7	Khulna	47800	17564	88.2
4	Rajshahi	64408	10578	39.4	Rangpur	45272	12030	63.8	Rajshahi	62696	22059	84.4
5	Chittagong	66239	10314	37.4	Khulna	40485	10485	62.2	Barisal	31288	10693	82.0
6	Khulna	55286	8572	37.2	Rajshahi	49061	11155	54.6	Chittagong	65956	21474	78.1
7	Barisal	34809	4098	28.3	Sylhet	19302	3939	49.0	Sylhet	28000	8762	75.1

Table :3**List of Districts achieved the highest Achievement Rate of Clinical Method against their projections for the period July to November 2015**

Sl. No.	Permanent Method (Cases)				IUD (Cases)				Implant (Cases)			
	District	Yearly Projection	Performance	Achi. Rate (%)	District	Yearly Projection	Performance	Achi. Rate (%)	District	Yearly Projection	Performance	Achi. Rate (%)
1.	Dhaka	20002	8021	96.2	Bandarban	1112	645	139.2	Thakurgaon	3371	2012	143.2
2.	Khulna	5630	2124	90.5	Kishoreganj	5447	2851	125.6	Chittagong	15000	8168	130.7
3.	Panchgarh	4000	1390	83.4	Bagerhat	3136	1585	121.3	Joipurhat	5000	2620	125.8

Table :4**List of Districts achieved the lowest Achievement Rate of Clinical Methods against their projections for the period July to November 2015**

Sl. No.	Permanent Method (Cases)				IUD (Cases)				Implant (Cases)			
	District	Yearly Projection	Performance	Achi. Rate (%)	District	Yearly Projection	Performance	Achi. Rate (%)	District	Yearly Projection	Performance	Achi. Rate (%)
1.	Sirajganj	15000	593	9.5	Nawabganj	4559	339	17.8	Nawabganj	5691	467	19.7
2.	Bhola	9000	509	13.6	Kushtia	6124	545	21.4	Meherpur	1500	221	35.4
3.	Pirojpur	7383	443	14.4	Habiganj	5354	506	22.7	Noakhali	9000	1416	37.8

Table :5**Comparative Statement of contraceptive performance for the month between July to November 2014 and July to November 2015**

Methods	Yearly Projection (2014-2015)	July to November 2014		Yearly Projection (2015-2016)	July to November 2015		Change of Jul'15 to Nov'15 over Jul'14 to Nov'14
		Performance (in CYP)	Achi. Rate (%)		Performance (in CYP)	Achi. Rate (%)	
Permanent Method (Male)	223954	40745	43.7	215241	33460	37.3	-6.4
Permanent Method (Female)	229213	49330	51.7	220155	45899	50.0	-1.6
Permanent Method (Total)	453167	90075	47.7	435396	79359	43.7	-4.0
IUD	346449	98650	68.3	339831	98192	69.3	1.0
Implant	351923	131164	89.4	421939	154068	87.6	-1.8
Injectables	4521808	1436541	76.2	4580464	1399264	73.3	-2.9
Oral Pill	11171525	2951610	63.4	11316441	2851715	60.5	-2.9
Condom	1595932	410773	61.8	1616634	394021	58.5	-3.3

Table :6**Performance & Distribution of Contraceptives by Method for the month of October and November 2015**

Method	Performance		% Change of Nov'15 over Oct'15
	Oct'15	Nov'15	
Permanent Method (Male, Cases)	6634	8023	20.9
Permanent Method (Female, Cases)	9814	11539	17.6
Permanent Method (Total, Cases)	16448	19562	18.9
I U D (Cases)	16393	33841	106.4
Implant (Cases)	32542	49957	53.5
Injectables (Doses)	1110540	1167668	5.1
Oral Pill (Cycles)	8460682	8579372	1.4
Condom (Pieces)	11771613	12439740	5.7

Table :7**Contribution of Government, NGOs and Multisector in respect of Contraceptive Performance during November 2015**

Method	Performance			Share of Contribution in Percentage	
	Govt.	NGOs & Multisector	Total	Government	NGOs and Multisector
Permanent Method (Male, Cases)	5686	2337	8023	70.9	29.1
Permanent Method (Female, Cases)	10712	827	11539	92.8	7.2
Permanent Method (Cases)	16398	3164	19562	83.8	16.2
IUD (Cases)	30118	3723	33841	89.0	11.0
Implant (Cases)	44528	5429	49957	89.1	10.9
Injectable (Doses)	943877	223791	1167668	80.8	19.2
Oral Pill (Cycles)	7278021	1301351	8579372	84.8	15.2
Condom (Pieces)	8881878	3557862	12439740	71.4	28.6

Table :8**NGO and Multisector wise Contraceptive Performance for the month of November 2015**

Sl. No.	NGO and Multisector	Oral Pill (Cycle)	Condom (Pieces)	Injectable (Vial)	IUD (Cases)	Implant (Nos)	Permanent Method		
							Male	Female	Total
1	Family Planning Association of Bangladesh (FPAB)	30732	32758	2603	25	161	48	17	65
2	Marie Stopes Clinic	6097	21798	3617	85	96	78	20	98
3	Palli Shisu Foundation (PSF)	56895	104145	8797	104	66	11	11	22
4	Shanirvar Bangladesh	6125	5495	701	12	13	20	2	22
5	CMH	1131	14200	181	0	0	0	3	3
6	BWHC	81	80	63	0	0	0	0	0
7	B.G.B	96	3070	0	0	0	0	0	0
8	R. H. Steps	1302	2208	238	16	0	0	0	0
9	MOHILA-O-SHISHU SHASTHA KALLYAN SAMITY	1597	1350	1198	0	0	0	0	0
10	SAVE Barakhata	599	48	56	0	0	0	0	0
11	Surjer Hasi Clinic	23275	40789	6150	23	111	28	9	37
12	Friend Ship	165	285	126	0	19	0	0	0
13	Kanchan	19295	55650	3508	8	30	1	14	15
14	Manab Bikash Sangstha	344	408	51	0	0	0	0	0
15	Dhaldanga Bohumukhi Samaj Unnayn Sangstha	7500	6000	400	0	0	6	1	7
16	Lamb Hospital	48	30	73	0	47	0	14	14
17	KMSS	285	1130	324	1	10	0	2	2
	Rangpur Division	155567	289444	28086	274	553	192	93	285
1	Family Planning Association of Bangladesh (FPAB)	43600	124500	3026	60	272	16	33	49
2	BAVS	183	2548	88	1	40	40	38	78
3	Marie Stopes Clinic	3044	58805	2701	153	212	368	18	386
4	Palli Shisu Foundation (PSF)	13172	23164	2094	40	0	0	1	1
5	Jatio Tarun Shanga	18525	45708	2815	22	8	0	10	10
6	Bamaneh	30303	45776	2835	27	33	0	6	6
7	Tilottoma	16758	114014	5526	47	58	2	14	16
8	Anonnya Somaj Kallyan Samity	2920	6110	1035	2	0	0	0	0
9	Shanirvar Bangladesh	4142	6128	180	8	13	2	0	2
10	Sromo Kallyan Shangstha	81	252	0	0	0	0	0	0
11	B.G.B	97	950	0	0	0	0	0	0
12	R. H. Steps	625	1980	285	18	0	0	0	0
13	MR CLINIC	294	825	37	1	0	0	0	0
14	POLLI SHISHU CLINIC	8587	10402	1596	11	0	0	0	0
15	JTS-GONO UNNAYAN ACADEMY	23434	57324	3750	36	18	2	6	8
16	THANGAMARA	529	2988	208	2	11	0	4	4
17	Darpon	4164	9266	999	4	0	0	0	0
18	l pas	15	80	0	0	0	0	0	0
19	Surjer Hasi Clinic	1850	4578	762	11	16	2	1	3
20	Population Services & Training Centre (PSTC)	870	19152	831	1	19	0	4	4
21	KMSS	3529	56867	979	2	5	0	5	5
22	SORNALY	5762	9756	1047	5	0	0	0	0
23	Chardulai	2992	5892	471	21	0	0	0	0
	Rajshahi Division	185476	607065	31265	472	705	432	140	572
1	Family Planning Association of Bangladesh (FPAB)	38167	96402	1685	35	105	7	8	15
2	BAVS	963	6874	318	0	7	211	0	211
3	Marie Stopes Clinic	2606	29863	2011	115	100	2	3	5
4	Palli Shisu Foundation (PSF)	6167	7360	973	5	5	1	6	7
5	Paribarik Shastha Clinic	4044	3072	519	11	0	0	0	0
6	Jatio Tarun Shanga	18965	43842	3059	28	23	1	15	16
7	Paribar Kallyan Shangstha (PKS)	47118	152827	12149	39	107	2	34	36
8	Anonnya Somaj Kallyan Samity	6454	8472	791	3	4	0	8	8
9	PSKS	801	18728	549	14	21	0	0	0
10	Sromo Kallyan Shangstha	936	4680	0	0	0	0	0	0
11	Addin Hospital	7665	6480	2107	1	0	0	16	16
12	PSKP	2771	6088	1038	25	35	1	5	6
13	CMH	150	1800	4	0	0	0	0	0
14	BWHC	123	170	68	0	0	0	0	0
15	BONOPHUL (PKS)	2497	17108	854	14	15	0	9	9
16	B.G.B	90	1535	2	0	0	0	0	0
17	R. H. Steps	2061	3744	309	6	0	0	0	0

Sl. No.	NGO and Multisector	Oral Pill (Cycle)	Condom (Pieces)	Injectable (Vial)	IUD (Cases)	Implant (Nos)	Permanent Method		
							Male	Female	Total
18	VPKA (VP KENDRA)	3318	9280	1055	3	2	0	0	0
19	CRC	18265	17430	1175	23	39	3	0	3
20	FAIR FOUNDATION	3189	11592	1154	12	2	6	0	6
21	SGS	1352	6768	349	4	26	0	9	9
22	Police Hospital	36	3395	50	0	0	0	0	0
23	Surjer Hasi Clinic	2779	10584	620	1	7	0	2	2
24	MANOB SHEBA	1866	4580	0	0	0	0	0	0
25	BNS TITUMIR	5850	11900	0	0	0	0	0	0
26	Peoples Development Community (PDC)	12400	6500	1000	0	0	0	0	0
	Khulna Division	190633	491074	31839	339	498	234	115	349
1	Family Planning Association of Bangladesh (FPAB)	15726	49556	1128	12	74	17	4	21
2	BAVS	159	4704	29	6	19	128	2	130
3	Marie Stopes Clinic	885	6136	493	76	4	41	0	41
4	Paribarik Shastha Clinic	821	3286	723	8	21	0	0	0
5	Shanirvar Bangladesh	25109	63738	9092	44	47	0	0	0
6	R. H. Steps	567	84	55	10	0	0	0	0
7	Surjer Hasi Clinic	285	858	357	56	56	0	0	0
8	UPHCP	2437	7740	840	14	21	4	8	12
	Barisal Division	45989	136102	12717	226	242	190	14	204
1	Family Planning Association of Bangladesh (FPAB)	65625	148391	3192	53	405	27	12	39
2	BAVS	261	13208	87	31	86	465	7	472
3	Marie Stopes Clinic	18040	107503	6255	552	533	423	21	444
4	Paribarik Shastha Clinic	1284	10829	751	8	5	1	2	3
5	Jatio Tarun Shanga	17030	73585	3510	62	72	8	4	12
6	Bamaneh	14393	56981	2741	38	27	0	7	7
7	Shanirvar Bangladesh	172784	332844	18084	309	291	30	50	80
8	Sromo Kallyan Shangstha	507	4932	0	0	0	0	0	0
9	Addin Hospital	1437	750	208	2	9	0	44	44
10	BAPSA	5161	25557	1688	75	58	69	2	71
11	Radda Barnen	398	4870	536	5	0	0	0	0
12	UTPS	4228	12468	955	76	102	2	15	17
13	PSKP	4455	28350	1299	16	18	32	2	34
14	Gono Shastha Kendra	622	7300	401	0	27	0	0	0
15	Anirban Sangsad	333	1200	98	0	0	0	0	0
16	ICDDR,B	228	800	5	0	0	0	0	0
17	CMH	402	7300	45	0	0	0	5	5
18	SPIRE	5307	7200	601	2	0	0	0	0
19	Shimantik	414	2832	119	6	6	22	5	27
20	Nagar Unnoyan Somaj Seba Shangstha	6549	12592	615	10	0	0	0	0
21	SHAKTTI FOUNDATION	667	5625	70	0	0	0	0	0
22	BWHC	700	3762	586	6	0	0	0	0
23	B.G.B	27	950	0	0	0	0	0	0
24	Association in Training & Management (AITAM)	174	843	95	1	0	0	1	1
25	MANOBIK SHAHAJJYA SAMITY	83	408	35	0	0	0	0	0
26	R. H. Steps	2350	5856	639	47	8	0	1	1
27	WORLD CONCERN	1101	4284	326	0	0	0	0	0
28	VPKA (VP KENDRA)	13612	61950	3485	32	44	2	4	6
29	MMKS	223	453	222	0	0	0	0	0
30	VFWA	1341	4044	607	7	9	2	2	4
31	Nari Moytri	3837	26534	1465	39	49	4	12	16
32	SGS	20373	32926	1482	20	8	1	3	4
33	CWFD	6603	33903	2155	33	19	0	1	1
34	Aid For Poor People	5082	6000	557	0	0	0	0	0
35	B G M E	712	2417	151	0	0	0	0	0
36	Surjer Hasi Clinic	58522	160389	7251	126	34	3	3	6
37	Provti S K S Prishad	4604	9560	604	0	0	0	0	0
38	KUMUDINI HOSPATIL	42	320	19	5	0	1	5	6
39	HRDS	593	664	133	0	0	0	0	0
40	Family Welfare Assosiation	4302	7752	570	0	0	0	0	0
41	Population Services & Training Centre (PSTC)	32600	101458	7013	157	291	4	29	33

Sl. No.	NGO and Multisector	Oral Pill (Cycle)	Condom (Pieces)	Injectable (Vial)	IUD (Cases)	Implant (Nos)	Permanent Method		
							Male	Female	Total
42	Jonoseba M&C W Songstha	2808	9624	200	9	0	0	0	0
43	KMSS	837	6165	319	8	10	0	0	0
44	Shastha Prokalpo	18	0	117	0	0	0	14	14
45	Sazeda Foundation	109	168	95	4	1	0	0	0
46	Ma-O-Shisu Unnoyan Shangstha	6528	6816	704	0	0	0	0	0
47	Sonar Bangla Samaj Kalyan	7113	8160	602	1	0	0	0	0
48	khulna Mukti Sena	3312	16200	589	58	65	0	3	3
49	Sushastha Community Health Care	102	384	13	0	0	0	0	0
50	Rural Health Development Organization(RHDO)	69	506	15	2	0	0	0	0
51	Daridra Paribar Seba Songshta	4677	456	596	0	0	0	0	0
52	M S F Belajayam	69	7083	212	0	0	0	0	0
53	Ucchatar Samaj Unnayan Songtha	4089	5064	602	0	0	0	0	0
54	Urban Health Care	2014	11268	442	9	17	0	11	11
55	Nahar Health Services	174	1260	105	3	0	0	0	0
56	Perticipatory Deveolpment Action	271	2124	34	0	0	0	0	0
	Dhaka Division	509196	1404868	73300	1812	2194	1096	265	1361
1	Family Planning Association of Bangladesh (FPAB)	24512	59786	2763	57	214	2	6	8
2	BAVS	114	1124	20	0	0	21	4	25
3	Marie Stopes Clinic	6323	36684	2527	151	175	75	22	97
4	Paribarik Shastha Clinic	1671	3132	481	1	0	0	0	0
5	Bamaneh	7111	29200	1932	13	2	0	1	1
6	Shanirvar Bangladesh	16600	45951	2459	18	3	0	5	5
7	BAPSA	1305	3264	195	0	0	0	0	0
8	ICDDR,B	2445	2865	1911	0	0	0	0	0
9	FDSR	45079	61142	7825	53	132	3	9	12
10	CMH	88	80	23	0	0	0	5	5
11	SUPIRAT	9660	48088	3908	25	3	0	2	2
12	PROSHANTI	2096	11708	979	5	0	0	0	0
13	NISKRITY	4590	13746	2922	6	17	0	1	1
14	IMAGE	615	3907	318	1	3	0	0	0
15	MOMOTA	2385	14982	1369	7	284	0	14	14
16	SUS (TMA , NASIRABAD)	17047	48012	1877	6	2	0	0	0
17	B.G.B	63	785	4	0	0	0	0	0
18	R. H. Steps	804	4824	289	34	0	0	0	0
19	BANDHAN	12892	50321	2362	45	1	0	2	2
20	33 Podatik	1094	11000	55	2	0	0	5	5
21	Ghasful	630	5100	81	3	0	0	1	1
22	Surjer Hasi Clinic	7199	29184	2175	26	25	0	0	0
23	B.R.D.B	195	1452	92	0	0	0	0	0
24	RTMI	830	3576	449	0	0	0	0	0
25	SURJER HASHI CLINIC	2450	10448	897	16	0	0	4	4
26	NAGAR MATRI SADAN	117	492	33	5	18	3	10	13
27	NAGAR SASTHO KENDRO	1116	2136	557	8	47	0	0	0
	Chittagong Division	169031	502989	38503	482	926	104	91	195
1	Family Planning Association of Bangladesh (FPAB)	10983	21113	902	0	131	6	16	22
2	BAVS	26	1116	21	0	48	31	24	55
3	Marie Stopes Clinic	1488	21305	513	40	39	47	45	92
4	CMH	3101	9268	387	0	0	0	0	0
5	Shimantik	23147	55122	3286	58	83	3	19	22
6	BWHC	116	2280	55	0	0	0	0	0
7	RED CRESCENT SANGSTHA	165	180	43	0	0	0	0	0
8	B.G.B	66	1265	0	0	0	0	0	0
9	R. H. Steps	270	972	55	6	0	0	0	0
10	Sylhet Samaj Kallyan Sangatha	3421	7576	2377	7	10	2	5	7
11	Surjer Hasi Clinic	846	3589	399	6	0	0	0	0
12	SUPPS	1758	2484	43	1	0	0	0	0
13	TIL Welfare Division	40	0	0	0	0	0	0	0
14	Govt. Labour Welfare Center	33	50	0	0	0	0	0	0
	Sylhet Division	45460	126320	8081	118	311	89	109	198
	Total NGO and Multisectoral Performance	1301352	3557862	223791	3723	5429	2337	827	3164

Table :9**District wise Projection, Performance and Achievement Rate of Permanent and Long Acting Methods**

District	Permanent Method (Cases)					IUD (Cases)					Implant (Cases)				
	Yearly Projection	Reporting Month		Jul'15 to Nov'15		Yearly Projection	Reporting Month		Jul'15 to Nov'15		Yearly Projection	Reporting Month		Jul'15 to Nov'15	
		Perform.	Achi. Rate(%)	Perform.	Achi. Rate(%)		Perform.	Achi. Rate(%)	Perform.	Achi. Rate(%)		Perform.	Achi. Rate(%)	Perform.	Achi. Rate(%)
Dinajpur	6986	550	94.5	2398	82.4	5811	712	147.0	1981	81.8	10000	1530	183.6	4701	112.8
Thakurgaon	3295	160	58.3	775	56.4	3500	193	66.2	500	34.3	3371	564	200.8	2012	143.2
Panchgarh	4000	283	84.9	1390	83.4	2200	268	146.2	827	90.2	4000	372	111.6	1697	101.8
Nilphamari	3794	288	91.1	1112	70.3	4600	651	169.8	1674	87.3	7000	917	157.2	2936	100.7
Rangpur	8995	677	90.3	2777	74.1	6379	659	124.0	1764	66.4	12100	1790	177.5	4630	91.8
Kurigram	10500	271	31.0	880	20.1	10597	717	81.2	1703	38.6	9064	936	123.9	3353	88.8
Gaibandha	7862	490	74.8	1816	55.4	6638	672	121.5	2596	93.9	15575	1545	119.0	5192	80.0
Lalmonirhat	5368	100	22.4	606	27.1	5547	488	105.6	985	42.6	6500	540	99.7	2723	100.5
Rangpur Div.	50800	2819	66.6	11754	55.5	45272	4360	115.6	12030	63.8	67610	8194	145.4	27244	96.7
Bogra	12709	367	34.7	1490	28.1	7498	814	130.3	2013	64.4	11500	1760	183.7	5926	123.7
Joipurhat	2400	132	66.0	751	75.1	2500	175	84.0	438	42.0	5000	671	161.0	2620	125.8
Noagaon	6631	359	65.0	1462	52.9	4891	327	80.2	933	45.8	6270	936	179.1	2565	98.2
Nawabganj	5600	244	52.3	1105	47.4	4559	127	33.4	339	17.8	5691	225	47.4	467	19.7
Rajshahi	9837	712	86.9	3127	76.3	6222	467	90.1	1306	50.4	10000	1184	142.1	3482	83.6
Natore	4981	246	59.3	1078	51.9	4351	329	90.7	921	50.8	6108	901	177.0	3069	120.6
Pabna	7250	192	31.8	972	32.2	8348	748	107.5	2804	80.6	8627	690	96.0	2165	60.2
Serajganj	15000	176	14.1	593	9.5	10692	763	85.6	2401	53.9	9500	703	88.8	1765	44.6
Rajshahi Div.	64408	2428	45.2	10578	39.4	49061	3750	91.7	11155	54.6	62696	7070	135.3	22059	84.4
Kushtia	6000	143	28.6	556	22.2	6124	181	35.5	545	21.4	6050	443	87.9	1327	52.6
Meherpur	2549	101	47.5	387	36.4	2200	109	59.5	219	23.9	1500	68	54.4	221	35.4
Chuadanga	4386	159	43.5	744	40.7	2000	220	132.0	729	87.5	3500	398	136.5	1394	95.6
Jhenaidaha	9165	242	31.7	765	20.0	5889	352	71.7	1144	46.6	4966	574	138.7	2071	100.1
Magura	4607	169	44.0	625	32.6	2200	279	152.2	595	64.9	4500	491	130.9	1401	74.7
Narail	4316	156	43.4	421	23.4	2000	224	134.4	590	70.8	2212	338	183.4	725	78.7
Jessore	8115	282	41.7	1200	35.5	7801	753	115.8	2170	66.8	8072	856	127.3	2794	83.1
Khulna	5630	539	114.9	2124	90.5	5200	553	127.6	1911	88.2	7500	1154	184.6	3747	119.9
Bagerhat	5123	217	50.8	751	35.2	3136	731	279.7	1585	121.3	4500	705	188.0	1680	89.6
Satkhira	5395	270	60.1	999	44.4	3935	356	108.6	997	60.8	5000	771	185.0	2204	105.8
Khulna Div.	55286	2278	49.4	8572	37.2	40485	3758	111.4	10485	62.2	47800	5798	145.6	17564	88.2
Barguna	3116	218	84.0	661	50.9	2768	378	163.9	987	85.6	3200	472	177.0	1358	101.9
Patuakhali	6700	251	45.0	984	35.2	4200	434	124.0	1117	63.8	6770	755	133.8	2550	90.4
Barisal	6100	360	70.8	1286	50.6	4433	563	152.4	1624	87.9	6000	837	167.4	2622	104.9
Jhalakati	2510	71	33.9	215	20.6	1434	169	141.4	494	82.7	3344	441	158.3	862	61.9
Bhola	9000	143	19.1	509	13.6	6681	399	71.7	1224	44.0	8474	702	99.4	2021	57.2
Pirojpur	7383	164	26.7	443	14.4	3500	392	134.4	1236	84.8	3500	404	138.5	1280	87.8
Barisal Div.	34809	1207	41.6	4098	28.3	23016	2335	121.7	6682	69.7	31288	3611	138.5	10693	82.0

District	Permanent Method (Cases)					IUD (Cases)					Implant (Cases)				
	Yearly Projection	Reporting Month		Jul'15 to Nov'15		Yearly Projection	Reporting Month		Jul'15 to Nov'15		Yearly Projection	Reporting Month		Jul'15 to Nov'15	
		Perform.	Achi. Rate(%)	Perform.	Achi. Rate(%)		Perform.	Achi. Rate(%)	Perform.	Achi. Rate(%)		Perform.	Achi. Rate(%)	Perform.	Achi. Rate(%)
Gopalganj	8411	358	51.1	1599	45.6	2500	399	191.5	945	90.7	2501	304	145.9	1001	96.1
Madaripur	3873	100	31.0	365	22.6	2363	334	169.6	878	89.2	5000	607	145.7	1741	83.6
Shariatpur	6957	137	23.6	467	16.1	3393	514	181.8	1374	97.2	3900	446	137.2	1110	68.3
Faridpur	6071	398	78.7	1518	60.0	4974	580	139.9	1765	85.2	6000	696	139.2	1928	77.1
Rajbari	3862	122	37.9	594	36.9	2825	360	152.9	1121	95.2	5000	541	129.8	2001	96.0
Dhaka	20002	1734	104.0	8021	96.2	17000	1938	136.8	6586	93.0	14000	1883	161.4	6259	107.3
Gazipur	8500	371	52.4	1436	40.5	6142	563	110.0	1957	76.5	8444	720	102.3	2158	61.3
Munshiganj	5401	128	28.4	575	25.6	4705	641	163.5	1136	57.9	5650	461	97.9	1030	43.8
Narayanganj	9203	553	72.1	2019	52.7	5000	731	175.4	2224	106.8	4800	730	182.5	2182	109.1
Narshingdi	7083	301	51.0	1043	35.3	7880	755	115.0	2092	63.7	4828	560	139.2	1531	76.1
Manikganj	6507	538	99.2	1798	66.3	2768	430	186.4	1092	94.7	4500	679	181.1	1829	97.5
Tangail	11000	554	60.4	2334	50.9	10639	966	109.0	2881	65.0	8648	1528	212.0	4195	116.4
Jamalpur	4809	185	46.2	724	36.1	4846	614	152.0	1792	88.7	6425	985	184.0	2870	107.2
Sherpur	4248	121	34.2	393	22.2	3807	281	88.6	909	57.3	4000	667	200.1	1796	107.8
Mymensingh	13042	558	51.3	2164	39.8	10122	1164	138.0	3333	79.0	18276	2390	156.9	8096	106.3
Kishoreganj	8423	483	68.8	2130	60.7	5447	1030	226.9	2851	125.6	10000	1234	148.1	3928	94.3
Netrokona	6179	286	55.5	967	37.6	5069	759	179.7	1442	68.3	6617	1078	195.5	2617	94.9
Dhaka Div.	133571	6927	62.2	28147	50.6	99480	12059	145.5	34378	82.9	118589	15509	156.9	46272	93.6
B. Baria	6312	267	50.8	1060	40.3	7200	634	105.7	1757	58.6	6756	546	97.0	1606	57.1
Comilla	12500	504	48.4	2237	43.0	15632	1455	111.7	4474	68.7	14501	1046	86.6	3333	55.2
Chandpur	5539	241	52.2	1139	49.4	5262	502	114.5	1421	64.8	4740	647	163.8	1562	79.1
Feni	3536	141	47.9	554	37.6	3069	257	100.5	924	72.3	2861	251	105.3	820	68.8
Noakhali	10561	304	34.5	1051	23.9	8432	500	71.2	1517	43.2	9000	490	65.3	1416	37.8
Laxmipur	7343	136	22.2	568	18.6	3989	529	159.1	1615	97.2	4515	418	111.1	1427	75.9
Chittagong	10000	576	69.1	2203	52.9	12000	1448	144.8	5122	102.4	15000	2600	208.0	8168	130.7
Cox's Bazar	4549	193	50.9	406	21.4	4346	455	125.6	1237	68.3	4329	651	180.5	1558	86.4
Rangamati	1416	76	64.4	305	51.7	946	146	185.2	430	109.1	1528	228	179.1	756	118.7
Khagrachhari	3140	107	40.9	385	29.4	1227	173	169.2	381	74.5	1500	106	84.8	445	71.2
Bandarban	1343	129	115.3	406	72.6	1112	280	302.2	645	139.2	1226	170	166.4	383	75.0
Chittagong Div.	66239	2674	48.4	10314	37.4	63215	6379	121.1	19523	74.1	65956	7153	130.1	21474	78.1
Sylhet	8951	526	70.5	2278	61.1	4500	405	108.0	1325	70.7	6500	888	163.9	3002	110.8
Habiganj	7376	177	28.8	1128	36.7	5354	166	37.2	506	22.7	8513	445	62.7	1506	42.5
Moulavibazar	4456	204	54.9	1024	55.2	3883	286	88.4	1089	67.3	5000	471	113.0	1715	82.3
Sunamganj	9500	322	40.7	1466	37.0	5565	343	74.0	1019	43.9	7987	818	122.9	2539	76.3
Sylhet Div.	30283	1229	48.7	5896	46.7	19302	1200	74.6	3939	49.0	28000	2622	112.4	8762	75.1
National	435396	19562	53.9	79359	43.7	339831	33841	119.5	98192	69.3	421939	49957	142.1	154068	87.6

Table :10**District wise Projection, Performance and Achievement Rate of Short Acting Methods**

District	Injectables					Oral Pill					Condom				
	Yearly Projection	Reporting Month		Jul'15 to Nov'15		Yearly Projection	Reporting Month		Jul'15 to Nov'15		Yearly Projection	Reporting Month		Jul'15 to Nov'15	
		Perform. (in CYP)	Achi. Rate (%)	Perform. (in CYP)	Achi. Rate (%)		Perform. (in CYP)	Achi. Rate (%)	Perform. (in CYP)	Achi. Rate (%)		Perform. (in CYP)	Achi. Rate (%)	Perform. (in CYP)	Achi. Rate (%)
Dinajpur	111329	5290	57.0	25259	54.5	275049	13103	57.2	66727	58.2	39293	1033	31.5	4778	29.2
Thakurgaon	51219	3905	91.5	18726	87.7	126542	6307	59.8	31919	60.5	18077	317	21.0	1480	19.6
Panchgarh	37487	2812	90.0	13424	85.9	92614	6004	77.8	29941	77.6	13231	294	26.7	1412	25.6
Nilphamari	69391	5048	87.3	24248	83.9	171437	10095	70.7	49908	69.9	24491	576	28.2	2802	27.5
Rangpur	109558	8075	88.4	40259	88.2	270673	14167	62.8	71627	63.5	38668	1218	37.8	5716	35.5
Kurigram	88023	8137	110.9	39306	107.2	217468	15402	85.0	74315	82.0	31067	1423	55.0	6651	51.4
Gaibandha	93261	7339	94.4	35723	91.9	230411	14122	73.5	70189	73.1	32916	1383	50.4	6434	46.9
Lalmonirhat	47194	3756	95.5	18998	96.6	116596	5741	59.1	29343	60.4	16657	457	32.9	2044	29.5
Rangpur Div.	607463	44360	87.6	215944	85.3	1500790	84942	67.9	423969	67.8	214399	6701	37.5	31317	35.1
Bogra	130270	5940	54.7	28016	51.6	321843	14379	53.6	70591	52.6	45978	2471	64.5	11682	61.0
Joipurhat	36390	1106	36.5	5509	36.3	89906	3174	42.4	16062	42.9	12844	444	41.5	2196	41.0
Noagaon	99495	3721	44.9	17768	42.9	245812	12708	62.0	64069	62.6	35116	1218	41.6	5863	40.1
Nawabganj	61439	2901	56.7	13445	52.5	151791	5084	40.2	24838	39.3	21684	839	46.4	3886	43.0
Rajshahi	105080	6071	69.3	28296	64.6	259610	10739	49.6	53299	49.3	37087	3014	97.5	13120	84.9
Natore	70428	3132	53.4	15042	51.3	174000	8315	57.3	42875	59.1	24857	1428	68.9	6637	64.1
Pabna	97742	6589	80.9	31627	77.7	241481	13882	69.0	64237	63.8	34497	1671	58.1	7856	54.7
Seraiganj	108319	7819	86.6	37739	83.6	267611	14222	63.8	69757	62.6	38230	2302	72.3	10770	67.6
Rajshahi Div.	709165	37278	63.1	177441	60.1	1752054	82502	56.5	405729	55.6	250293	13389	64.2	62010	59.5
Kushtia	78546	4804	73.4	22751	69.5	194055	7817	48.3	38519	47.6	27722	1367	59.2	6483	56.1
Meherpur	27982	2585	110.8	13131	112.6	69132	2495	43.3	12592	43.7	9876	637	77.4	3083	74.9
Chuadanga	45419	3210	84.8	14790	78.2	112211	4192	44.8	20683	44.2	16030	577	43.2	2871	43.0
Jhenaidaha	67691	3476	61.6	16933	60.0	167236	8148	58.5	41460	59.5	23891	845	42.4	4059	40.8
Magura	32540	1886	69.6	9118	67.2	80392	4630	69.1	23078	68.9	11485	457	47.8	2060	43.1
Narail	26525	1254	56.7	6024	54.5	65531	3144	57.6	15956	58.4	9362	487	62.4	2345	60.1
Jessore	103419	8288	96.2	39394	91.4	255506	12365	58.1	58634	55.1	36501	1977	65.0	9205	60.5
Khulna	83229	5169	74.5	24889	71.8	205625	11280	65.8	59300	69.2	29375	2470	100.9	11395	93.1
Bagerhat	52148	3252	74.8	15053	69.3	128836	8697	81.0	42673	79.5	18405	1313	85.6	6211	81.0
Satkhira	73750	3427	55.8	16406	53.4	182206	8754	57.7	44827	59.0	26029	1248	57.5	5907	54.5
Khulna Div.	591248	37351	75.8	178488	72.5	1460731	71523	58.8	357721	58.8	208676	11376	65.4	53619	61.7
Barguna	33358	2334	84.0	11417	82.1	82414	3190	46.4	15932	46.4	11773	204	20.8	968	19.7
Patuakhali	57543	4380	91.3	21286	88.8	142164	6119	51.6	30332	51.2	20309	504	29.8	2299	27.2
Barisal	72380	5554	92.1	26695	88.5	178820	8132	54.6	39808	53.4	25546	1125	52.9	4599	43.2
Jhalakati	19451	1181	72.9	5611	69.2	48056	2148	53.6	10425	52.1	6865	258	45.0	1202	42.0
Bhola	60905	9027	177.9	45454	179.1	150471	5677	45.3	28003	44.7	21496	803	44.8	3860	43.1
Pirojpur	33183	1938	70.1	8835	63.9	81982	4466	65.4	21754	63.7	11712	510	52.2	2252	46.1
Barisal Div.	276820	24414	105.8	119298	103.4	683907	29730	52.2	146255	51.3	97701	3404	41.8	15178	37.3

District	Injectables					Oral Pill					Condom				
	Yearly Projection	Reporting Month		Jul'15 to Nov'15		Yearly Projection	Reporting Month		Jul'15 to Nov'15		Yearly Projection	Reporting Month		Jul'15 to Nov'15	
		Perform. (in CYP)	Achi. Rate (%)	Perform. (in CYP)	Achi. Rate (%)		Perform. (in CYP)	Achi. Rate (%)	Perform. (in CYP)	Achi. Rate (%)		Perform. (in CYP)	Achi. Rate (%)	Perform. (in CYP)	Achi. Rate (%)
Gopalganj	39439	1859	56.6	9115	55.5	97437	6506	80.1	33198	81.8	13920	692	59.6	4154	71.6
Madaripur	38520	2904	90.5	14185	88.4	95167	5657	71.3	28112	70.9	13595	599	52.9	2873	50.7
Shariatpur	36994	2007	65.1	9983	64.8	91397	4124	54.1	21209	55.7	13057	598	55.0	2933	53.9
Faridpur	65700	3077	56.2	14289	52.2	162317	7803	57.7	39021	57.7	23188	1387	71.8	6559	67.9
Rajbari	36211	2501	82.9	11784	78.1	89463	4935	66.2	24711	66.3	12780	800	75.1	3804	71.4
Dhaka	135379	13428	119.0	62319	110.5	334466	20452	73.4	104717	75.1	47781	5203	130.7	23165	116.4
Gazipur	74165	2937	47.5	13920	45.0	183230	11472	75.1	54051	70.8	26176	1969	90.3	9460	86.7
Munshiganj	48945	2094	51.3	9906	48.6	120923	6476	64.3	32643	64.8	17275	1005	69.8	4814	66.9
Narayanganj	86162	6014	83.8	28482	79.3	212871	11091	62.5	54493	61.4	30410	1917	75.6	9105	71.9
Narshingdi	70643	6081	103.3	29154	99.0	174530	8505	58.5	44930	61.8	24933	1855	89.3	9124	87.8
Manikganj	52893	2741	62.2	13097	59.4	130677	5718	52.5	28264	51.9	18668	1087	69.9	5160	66.3
Tangail	143166	7552	63.3	37384	62.7	353704	22430	76.1	114580	77.7	50529	2982	70.8	14916	70.8
Jamalpur	83339	5153	74.2	25251	72.7	205897	11699	68.2	58355	68.0	29414	1505	61.4	7319	59.7
Sherpur	52553	4059	92.7	19094	87.2	129836	7391	68.3	36820	68.1	18548	842	54.4	4049	52.4
Mymensingh	176062	7066	48.2	33653	45.9	434976	31557	87.1	161307	89.0	62139	2777	53.6	13841	53.5
Kishoreganj	91830	4788	62.6	22376	58.5	226874	15526	82.1	79570	84.2	32411	2142	79.3	10405	77.0
Netrokona	71253	4279	72.1	19796	66.7	176036	13276	90.5	65041	88.7	25148	1429	68.2	6681	63.8
Dhaka Div.	1303253	78539	72.3	373786	68.8	3219801	194618	72.5	981022	73.1	459972	28789	75.1	138362	72.2
B. Baria	86608	5333	73.9	25481	70.6	213972	8034	45.1	40107	45.0	30567	2223	87.3	10583	83.1
Comilla	180577	11579	76.9	56243	74.8	446130	16765	45.1	82292	44.3	63733	3144	59.2	15602	58.8
Chandpur	78455	5436	83.1	26958	82.5	193829	6016	37.2	30086	37.3	27690	840	36.4	4137	35.9
Feni	45515	3032	79.9	14928	78.7	112449	3720	39.7	18601	39.7	16064	893	66.7	4341	64.9
Noakhali	90595	5229	69.3	25728	68.2	223823	6880	36.9	33946	36.4	31975	1212	45.5	6307	47.3
Laxmipur	54483	4590	101.1	23079	101.7	134606	3447	30.7	16876	30.1	19229	406	25.4	2052	25.6
Chittagong	174503	10058	69.2	46859	64.4	431125	17712	49.3	87152	48.5	61589	3048	59.4	14551	56.7
Cox's Bazar	65602	6754	123.5	31464	115.1	162075	7699	57.0	37328	55.3	23154	825	42.8	3800	39.4
Rangamati	16838	994	70.8	4599	65.5	41599	2454	70.8	12308	71.0	5943	400	80.8	1995	80.6
Khagrachhari	17969	1428	95.3	6499	86.8	44394	2830	76.5	14112	76.3	6342	369	69.8	1736	65.7
Bandarban	11191	993	106.5	4798	102.9	27647	1392	60.4	6947	60.3	3950	218	66.2	1005	61.1
Chittagong Div.	822335	55425	80.9	266636	77.8	2031650	76951	45.5	379754	44.9	290236	13577	56.1	66110	54.7
Sylhet	85551	6668	93.5	31061	87.1	211362	10462	59.4	52210	59.3	30195	2828	112.4	14043	111.6
Habiganj	64454	1973	36.7	9183	34.2	159240	6885	51.9	34496	52.0	22749	665	35.1	3304	34.9
Moulavibazar	55333	2956	64.1	13801	59.9	136706	5933	52.1	28891	50.7	19529	778	47.8	3637	44.7
Sunamganj	64842	2954	54.7	13626	50.4	160199	8412	63.0	41668	62.4	22886	1425	74.7	6441	67.5
Sylhet Div.	270181	14551	64.6	67671	60.1	667507	31692	57.0	157266	56.5	95358	5696	71.7	27425	69.0
National	4580464	291917	76.5	1399264	73.3	11316441	571958	60.7	2851715	60.5	1616634	82932	61.6	394021	58.5

Name of District	Total E. Couple	Oral Pill					Condom					Injectable				
		Old	New	Total	No Method	Switch Over	Old	New	Total	No Method	Switch Over	Old	New	Total	No Method	Switch Over
Gopalganj	233449	91418	1701	93119	664	572	21528	997	22525	363	359	25705	1036	26741	329	292
Madaripur	227671	88216	1254	89470	947	474	15312	520	15832	275	149	37429	701	38130	484	214
Shariatpur	218083	79016	1403	80419	706	340	18614	742	19356	303	159	38164	726	38890	619	341
Faridpur	388226	138049	2444	140493	1287	864	38317	1368	39685	617	463	49744	1334	51078	651	483
Rajbari	229090	84102	1545	85647	848	644	17427	823	18250	385	266	32562	813	33375	451	315
Dhaka	800375	282016	3939	285955	1627	904	80680	2266	82946	766	444	100336	2048	102384	715	523
Gazipur	437896	194488	1986	196474	873	702	35041	1029	36070	313	241	41595	1363	42958	384	280
Munshiganj	289542	104797	1706	106503	732	713	25656	969	26625	319	352	34027	1037	35064	403	392
Narayanganj	509693	193913	3215	197128	1408	1185	36624	1419	38043	662	585	76033	1910	77943	798	703
Narsingdi	417366	155587	2572	158159	935	1004	30439	1236	31675	426	403	67981	1714	69695	599	611
Manikganj	312189	109349	1992	111341	1063	857	27223	1071	28294	400	463	39981	1211	41192	492	471
Tangail	844472	348909	3652	352561	1986	1421	63175	1712	64887	769	582	102556	1951	104507	817	647
Jamalpur	491573	186068	2496	188564	1587	1035	27308	894	28202	400	352	98136	1229	99365	544	623
Sherpur	310134	130264	1500	131764	808	709	14911	496	15407	224	206	53639	972	54611	373	444
Mymensingh	1039861	485627	6019	491646	3408	2230	44698	1880	46578	747	493	115914	2983	118897	1050	1021
Kishoreganj	542356	229246	4449	233695	2601	2598	31784	1936	33720	846	854	66987	3203	70190	934	1020
Netrokona	420744	182482	3424	185906	2289	1255	17613	1345	18958	784	429	52447	1927	54374	727	619
Dhaka	7712720	3083547	45297	3128844	23769	17507	546350	20703	567053	8599	6800	1033236	26158	1059394	10370	8999
Brahmanbaria	511398	163986	2628	166614	1518	584	45216	1270	46486	803	264	85379	1655	87034	926	356
Comilla	1065238	386079	5499	391578	2957	1744	72901	2288	75189	1191	763	191842	3277	195119	1623	1153
Chandpur	463122	173764	2331	176095	1259	742	22898	748	23646	348	239	90527	1268	91795	636	527
Feni	268855	88953	1172	90125	842	491	20489	654	21143	472	267	44473	842	45315	602	420
Noakhali	543548	195224	2546	197770	1233	655	40982	1072	42054	484	263	96770	1633	98403	755	481
Lakshmipur	320807	108743	1420	110163	798	354	15449	537	15986	236	131	72550	1061	73611	494	251
Chittagong	1031764	402910	5676	408586	2795	1978	71732	2542	74274	1100	788	129411	3254	132665	1466	1116
Cox's Bazar	390795	136477	2949	139426	1157	657	18768	799	19567	343	204	93069	2044	95113	828	500
Rangamati	99519	38884	550	39434	172	204	6727	298	7025	90	100	14106	357	14463	96	133
Khagrachhari	106486	41330	513	41843	269	166	4399	218	4617	123	43	17260	333	17593	200	113
Bandarban	66638	18823	535	19358	219	148	3448	317	3765	125	37	11571	466	12037	185	95
Chittagong	4868170	1755173	25819	1780992	13219	7723	323009	10743	333752	5315	3099	846958	16190	863148	7811	5145
Sylhet	509332	156546	3346	159892	1921	990	48482	1327	49809	731	472	71623	1838	73461	868	529
Habiganj	381771	162694	2625	165319	1105	525	24834	839	25673	393	158	44990	1378	46368	514	271
Moulavi Bazar	328111	116086	2245	118331	1139	863	20230	873	21103	423	365	44869	1251	46120	569	485
Sunamganj	384649	140544	3101	143645	1990	1144	30918	1617	32535	1068	474	52576	1952	54528	937	648
Sylhet	1603863	575870	11317	587187	6155	3522	124464	4656	129120	2615	1469	214058	6419	220477	2888	1933
National	27095276	10306903	158598	10465501	83258	59805	1768103	66047	1834150	29694	22761	4278525	92548	4371073	44845	35864

Table :12**Number of New and Total Acceptors upto the end of October and November 2015**

Method	New Acceptors		% Change of Nov'15 over Oct'15	Total Acceptors		% Change of Nov'15 over Oct'15
	Oct'15	Nov'15		Oct'15	Nov'15	
Per.Method (Male)	4382	5409	23.4	836654	839921	0.4
Per.Method (Female)	9713	11390	17.3	2193507	2199481	0.3
Per.Method (Total)	14095	16799	19.2	3030161	3039402	0.3
IUD	10767	22630	110.2	796017	803798	1.0
Implant	24849	38715	55.8	952375	973429	2.2
Injectables	70615	92548	31.1	4357979	4371073	0.3
Oral Pill	126751	158598	25.1	10451697	10465501	0.1
Condom	45343	66047	45.7	1822202	1834150	0.7
Total	292420	395337	35.2	21410431	21487353	0.4

Table :13**CAR(%) by Division upto the end of October and November 2015**

Division	Oct'15	Nov'15	Change of Oct'15 over Sep'15
Rangpur	80.1	80.2	0.1
Rajshahi	81.4	81.5	0.1
Khulna	80.7	80.9	0.2
Barisal	78.8	79.1	0.3
Dhaka	78.5	78.8	0.3
Chittagong	76.6	76.9	0.3
Sylhet	78.0	78.3	0.3
National	79.1	79.3	0.2

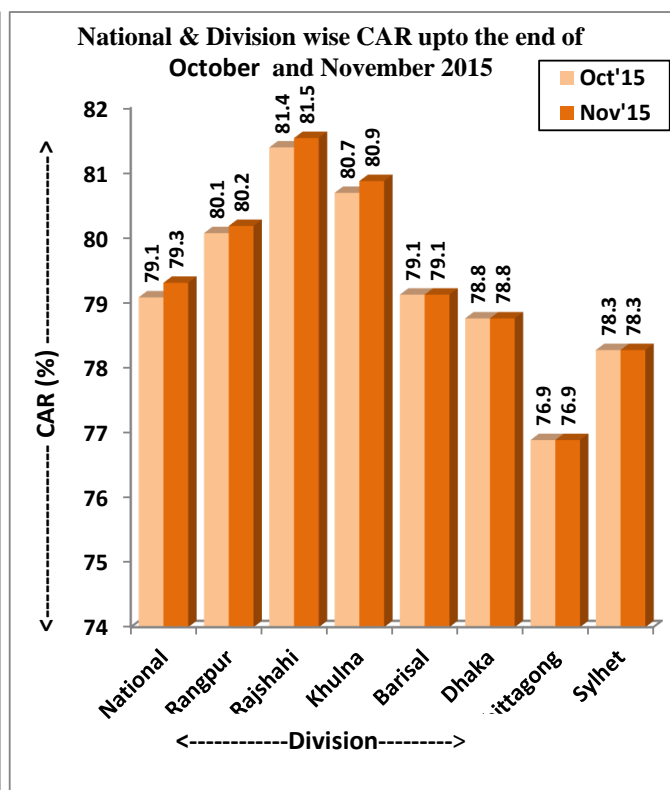
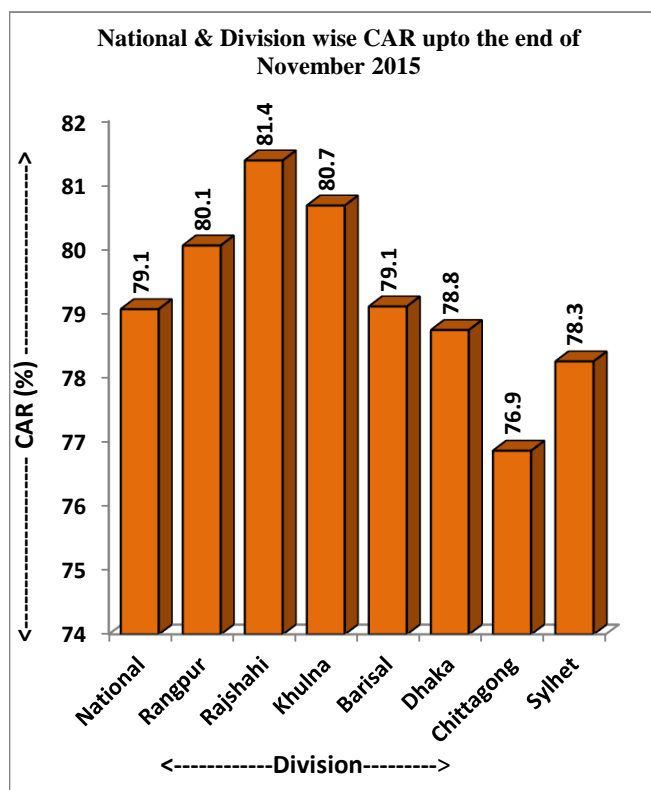


Table :14

District by Range of CAR upto the end of November 2015

Range	Sl.No.	District	CAR (%)
70% & above	1	Joipurhat	85.4
	2	Rajshahi	83.7
	3	Bogra	83.2
	4	Chuadanga	82.9
	5	Natore	82.9
	6	Bagerhat	82.8
	7	Gopalganj	82.3
	8	Kishoreganj	82.1
	9	Magura	81.9
	10	Lalmonirhat	81.7
	11	Nilphamari	81.7
	12	Panchgarh	81.5
	13	Patuakhali	81.4
	14	Sherpur	81.3
	15	Nawabganj	81.1
	16	Jessore	81.1
	17	Khulna	80.9
	18	Satkhira	80.9
	19	Naogaon	80.6
	20	Gaibandha	80.6
	21	Jamalpur	80.5
	22	Rangamati	80.5
	23	Narail	80.5
	24	Jhalakati	80.4
	25	Shariatpur	80.3
	26	Dinajpur	80.3
	27	Madaripur	80.2
	28	Manikganj	80.2
	29	Meherpur	80.0
	30	Thakurgaon	80.0
	31	Moulavi Bazar	79.7
	32	Bhola	79.6
	33	Kustia	79.5
	34	Netrokona	79.3
	35	Sunamganj	79.3
	36	Gazipur	79.2
	37	Jhenaidaha	79.2
	38	Faridpur	79.2
	39	Pirojpur	79.0
	40	Kurigram	78.9
	41	Pabna	78.8
	42	Serajganj	78.8
	43	Rangpur	78.7
	44	Mymensingh	78.6
	45	Habiganj	78.6
	46	Rajbari	78.5
	47	Comilla	78.3
	48	Tangail	78.2
	49	Bandarban	78.1
	50	Narshingdi	77.9
	51	Barguna	77.8
	52	Khagrachhari	77.6
	53	Cox's Bazar	77.6
	54	Narayanganj	77.4
	55	Chandpur	77.3
	56	Barisal	77.2
	57	Brahmanbaria	76.5
	58	Sylhet	76.3
	59	Chittagong	76.0
	60	Lakshmipur	75.9
	61	Noakhali	75.6
	62	Dhaka	75.5
	63	Feni	75.3
	64	Munshiganj	73.1

Range	District	CAR (%)
60% - 69%		

0%-59%	Nil
--------	-----

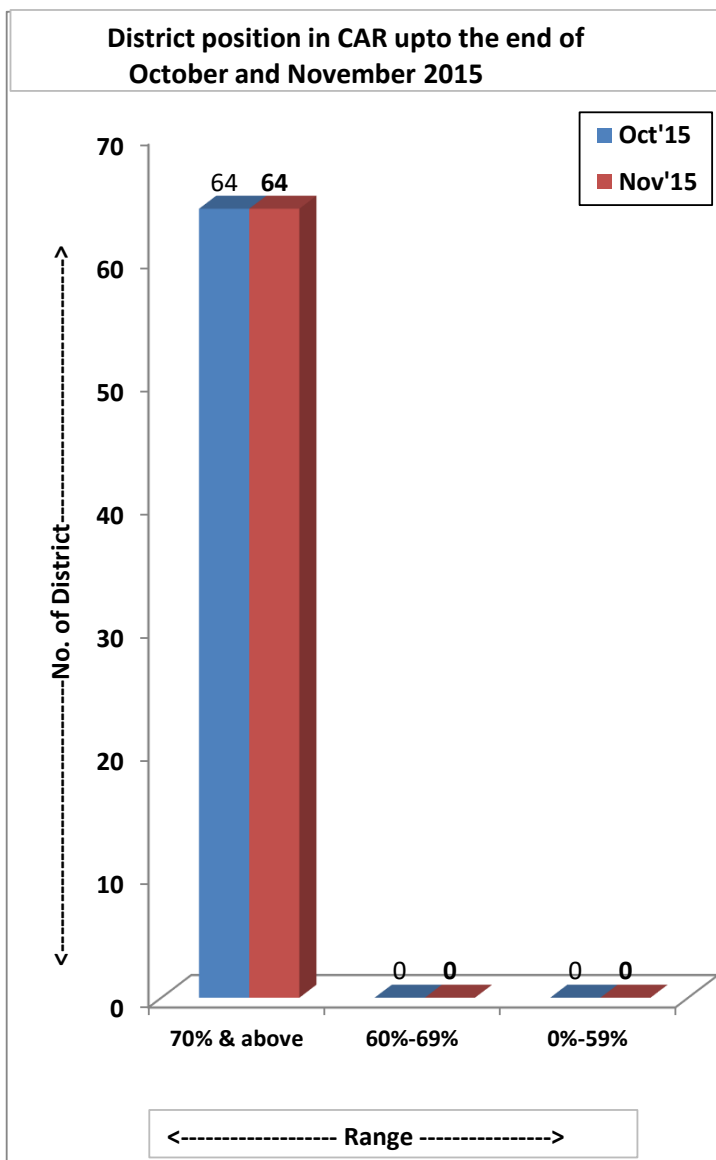


Table :15**List of Upazila achieved CAR 70% & above upto the end of November 2015**

Sl. No	Name of District	Name of Upazila	Total Couples	Total Acceptors	CAR (%)	Sl. No	Name of District	Name of Upazila	Total Couples	Total Acceptors	CAR (%)
1	Gopalganj	Gopalganj Sadar	61606	55537	90.1	70	Sherpur	Sribordi	56577	46610	82.4
2	Bagerhat	Bagerhat Sadar	54053	46753	86.5	71	Patuakhali	Kalapara	52629	43333	82.3
3	Joipurhat	Joypurhat Sadar	65538	56438	86.1	72	Nilphamari	Domar	55964	46074	82.3
4	Joipurhat	Khetlal	27007	23196	85.9	73	Bogra	Bogra Sadar	94403	77720	82.3
5	Bogra	Shibganj	89286	76671	85.9	74	Magura	Sripur	36926	30392	82.3
6	Joipurhat	Kalai	35320	30218	85.6	75	Kishoreganj	Kuliarchar	33084	27226	82.3
7	Joipurhat	Akkelpur	31775	27177	85.5	76	Gaibandha	Fulchhari	36400	29935	82.2
8	Bogra	Sonatola	40121	34247	85.4	77	Panchgarh	Debiganj	52269	42974	82.2
9	Rajshahi	Boalia	102583	87246	85.0	78	Lalmonirhat	Patgram	46653	38354	82.2
10	Manikganj	Ghior	37182	31600	85.0	79	Patuakhali	Bauphal	71174	58509	82.2
11	Bagerhat	Kachua	20217	17107	84.6	80	Naogaon	Naogaon Sadar	61854	50820	82.2
12	Naogaon	Niamatpur	58953	49854	84.6	81	Nawabganj	Nachol	31900	26204	82.1
13	Rajshahi	Godagari	71008	59987	84.5	82	Jessore	Keshobpur	59016	48461	82.1
14	Chuadanga	Damurhuda	71996	60682	84.3	83	Panchgarh	Atowari	29765	24438	82.1
15	Magura	Shalikha	32355	27261	84.3	84	Nilphamari	Nilphamari Sadar	101960	83695	82.1
16	Patuakhali	Dashmina	27763	23366	84.2	85	Nawabganj	Chapai Nawabganj (Sadar)	116488	95606	82.1
17	Satkhira	Asasuni	57177	48091	84.1	86	Narail	Lohagara	48523	39822	82.1
18	Bogra	Dupchanchia	44017	37004	84.1	87	Satkhira	Tala	65075	53393	82.0
19	Joipurhat	Panchbibi	55144	46350	84.1	88	Bogra	Nandigram	44116	36192	82.0
20	Khagrachhari	Matirang	23642	19853	84.0	89	Natore	Singra	86679	71083	82.0
21	Rajshahi	Durgapur	44878	37645	83.9	90	Panchgarh	Boda	54944	45028	82.0
22	Manikganj	Shibalaya	36430	30548	83.9	91	Gaibandha	Sundarganj	105367	86340	81.9
23	Manikganj	Saturia	37978	31844	83.8	92	Kishoreganj	Hossainpur	37672	30855	81.9
24	Satkhira	Debhata	26879	22507	83.7	93	Bogra	Gabtali	71994	58940	81.9
25	Netrokona	Kalmakanda	49637	41547	83.7	94	Naogaon	Patnitola	55293	45259	81.9
26	Bagerhat	Morranganj	66406	55581	83.7	95	Moulavi Bazar	Sreemongal	63201	51727	81.8
27	Natore	Natore Sadar	108696	90910	83.6	96	Netrokona	Barhatta	34523	28254	81.8
28	Jessore	Monirampur	94925	79364	83.6	97	Comilla	Burichong	63507	51966	81.8
29	Rajshahi	Bagmara	98826	82603	83.6	98	Nilphamari	Dimla	61981	50717	81.8
30	Patuakhali	Dumki	13893	11601	83.5	99	Kishoreganj	Itna	33175	27143	81.8
31	Rajshahi	Puthiya	48969	40844	83.4	100	Gaibandha	Sadullahpur	71001	58087	81.8
32	Rajshahi	Tanore	44737	37304	83.4	101	Sherpur	Jhenaigati	36710	30030	81.8
33	Bogra	Kahaloo	55742	46463	83.4	102	Bhola	Bhola Sadar	85091	69584	81.8
34	Pabna	Santhia	90722	75594	83.3	103	Jamalpur	Melandaha	63822	52178	81.8
35	Chuadanga	Alamdanga	86141	71770	83.3	104	Kishoreganj	Austagram	28930	23646	81.7
36	Rajshahi	Poba (Sadar)	74202	61808	83.3	105	Kishoreganj	Katiadi	58637	47921	81.7
37	Rangamati	Rangamati Sadar	19549	16283	83.3	106	Habiganj	Habiganj Sadar	59948	48971	81.7
38	Jessore	Bagherpara	46894	39059	83.3	107	Jhalakati	Kathalia	21076	17215	81.7
39	Natore	Lalpur	65943	54925	83.3	108	Kishoreganj	Mithamoin	23694	19347	81.7
40	Natore	Bagatipara	31923	26564	83.2	109	Jamalpur	Sharishabari	69501	56722	81.6
41	Chuadanga	Jiban Nagar	38049	31639	83.2	110	Kurigram	Chilmari	30479	24870	81.6
42	Bagerhat	Sarankhola	21508	17883	83.2	111	Dinajpur	Parbatipur	83562	68154	81.6
43	Rajshahi	Bagha	43913	36491	83.1	112	Rangamati	Kaptai	11037	9000	81.5
44	Bagerhat	Mongla	26973	22404	83.1	113	Panchgarh	Tetulia	27871	22722	81.5
45	Bogra	Dhunot	66857	55507	83.0	114	Kishoreganj	Pakundia	42419	34575	81.5
46	Bogra	Sariakandi	52761	43759	82.9	115	Tangail	Kalihati	85279	69499	81.5
47	Kishoreganj	Bhariab Bazar	55165	45730	82.9	116	Lalmonirhat	Lalmonirhat Sadar	78586	64043	81.5
48	Bogra	Shajahanpur	79911	66215	82.9	117	Bagerhat	Rampal	33547	27322	81.4
49	Rajshahi	Mohanpur	42990	35617	82.8	118	Sunamganj	Tahirpur	34524	28113	81.4
50	Lalmonirhat	Hatibandha	50958	42213	82.8	119	Rangpur	Pirganj	93800	76340	81.4
51	Bogra	Sheerpur	83531	69188	82.8	120	Shariatpur	Palong (Sadar)	42616	34675	81.4
52	Cox's Bazar	Chakaria	78876	65295	82.8	121	Rangamati	Naniarchar	8911	7250	81.4
53	Nawabganj	Bholahat	24641	20391	82.8	122	Bagerhat	Fakirhat	30794	25048	81.3
54	Khulna	Digholia	93367	77236	82.7	123	Mymensingh	Bhaluka	89353	72656	81.3
55	Kishoreganj	Tarail	31761	26241	82.6	124	Kishoreganj	Bazitpur	45370	36887	81.3
56	Khulna	Dumuria	65035	53730	82.6	125	Lalmonirhat	Kaliganj	54611	44394	81.3
57	Rajshahi	Charghat	49725	41077	82.6	126	Magura	Magura Sadar	83363	67766	81.3
58	Natore	Gurudashpur	53803	44442	82.6	127	Jhenaidaha	Kotchandpur	33802	27477	81.3
59	Bogra	Adamdighi	45952	37944	82.6	128	Kurigram	Char Rajibpur	22746	18488	81.3
60	Sherpur	Nalitabari	57388	47387	82.6	129	Naogaon	Sapahar	37497	30461	81.2
61	Satkhira	Shyamnagar	74305	61332	82.5	130	Faridpur	Nagarkanda	36320	29494	81.2
62	Kishoreganj	Kishoreganj Sadar	70589	58255	82.5	131	Gaibandha	Palashbari	59679	48429	81.1
63	Khulna	Fultala	27518	22703	82.5	132	Meherpur	Meherpur Sadar	63286	51352	81.1
64	Sunamganj	Sunamganj Sadar	41084	33895	82.5	133	Dinajpur	Birampur	37089	30091	81.1
65	Kishoreganj	Nikli	27206	22433	82.5	134	Jessore	Jessore Sadar	148383	120346	81.1
66	Nilphamari	Syadpur	57065	47044	82.4	135	Seraiganj	Kazipur	58138	47130	81.1
67	Kishoreganj	Karimganj	54654	45055	82.4	136	Chittagong	Lohagara	57168	46342	81.1
68	Natore	Baraigram	68018	56057	82.4	137	Thakurgaon	Ranisankail	48069	38966	81.1
69	Naogaon	Porsa	29496	24308	82.4	138	Dinajpur	Dinajpur Sadar	99844	80928	81.1

Sl. No	Name of District	Name of Upazila	Total Couples	Total Acceptors	CAR (%)	Sl. No	Name of District	Name of Upazila	Total Couples	Total Acceptors	CAR (%)
139	Jamalpur	Madarganj	54008	43756	81.0	210	Jamalpur	Bakshiganj	40871	32724	80.1
140	Chuadanga	Chuadanga Sadar	72016	58344	81.0	211	Rangamati	Jurachhari	4229	3386	80.1
141	Rangamati	Baghaichhari	11588	9388	81.0	212	Sunamganj	Dowara Bazar	37905	30346	80.1
142	Dinajpur	Hakimpur	20635	16717	81.0	213	Dinajpur	Nawabganj	49707	39787	80.0
143	Magura	Mohammadpur	40543	32845	81.0	214	Tangail	Ghatail	103191	82579	80.0
144	Nilphamari	Kishoreganj	56569	45808	81.0	215	Panchgarh	Panchgarh Sadar	58476	46793	80.0
145	Nawabganj	Shibganj	128184	103770	81.0	216	Madaripur	Madaripur Sadar	68395	54702	80.0
146	Jhenaidaha	Moheshpur	75862	61403	80.9	217	Habiganj	Nabiganj	59128	47287	80.0
147	Jamalpur	Dewanganj	59331	48021	80.9	218	Chittagong	Boalkhali	44454	35546	80.0
148	Narail	Kalia	44047	35637	80.9	219	Sunamganj	Jamalganj	28894	23096	79.9
149	Comilla	Brahmanpara	39785	32188	80.9	220	Thakurgaon	Thakurgaon Sadar	130431	104192	79.9
150	Khulna	Rupsha	37382	30241	80.9	221	Jamalpur	Jamalpur Sadar	136449	108977	79.9
151	Jhalakati	Jhalakati Sadar	35271	28523	80.9	222	Manikganj	Daulatpur	37946	30293	79.8
152	Narshingdi	Narshingdi Sadar	117607	95090	80.9	223	Habiganj	Chunarughat	60775	48504	79.8
153	Dhaka	Savar	179644	145241	80.8	224	Sunamganj	Jogonnanthpur	33519	26751	79.8
154	Gazipur	Kaliakair	62435	50469	80.8	225	Dinajpur	Birganj	70030	55883	79.8
155	Pabna	Faridpur	28632	23139	80.8	226	Netrokona	Mohonganj	31390	25047	79.8
156	Bhola	Lalmohan	62251	50298	80.8	227	Khulna	Koyra	40289	32141	79.8
157	Patuakhali	Golachipa	80351	64913	80.8	228	Jessore	Jhikarghachha	68777	54864	79.8
158	Dinajpur	Chirir Bandar	65200	52671	80.8	229	Bandarban	Bandarban Sadar	15336	12231	79.8
159	Dinajpur	Birol	56062	45279	80.8	230	Dinajpur	Bochaganj	34684	27651	79.7
160	Sherpur	Sherpur Sadar	116894	94379	80.7	231	Netrokona	Purbadhala	56826	45295	79.7
161	Sunamganj	Bishwamvarpur	25835	20849	80.7	232	Netrokona	Khaliaghuri	16895	13466	79.7
162	Bhola	Daulatkhan	33416	26959	80.7	233	Naogaon	Manda	92347	73581	79.7
163	Comilla	Debidwar	91513	73821	80.7	234	Kustia	Kustia Sadar	117626	93688	79.6
164	Lalmoinirhat	Aditmari	48516	39133	80.7	235	Satkhira	Kaliganj	64944	51720	79.6
165	Shariatpur	Naria	40998	33058	80.6	236	Gopalganj	Kotalipara	45090	35894	79.6
166	Barguna	Betagi	23492	18937	80.6	237	Tangail	Tangail Sadar	121727	96897	79.6
167	Cox's Bazar	Moheshkhali	54881	44237	80.6	238	Dinajpur	Ghoraghat	26117	20789	79.6
168	Patuakhali	Mirzaganj	24504	19745	80.6	239	Barisal	Hizla	24496	19497	79.6
169	Rangpur	Kaunia	50473	40670	80.6	240	Tangail	Bhuapur	43534	34640	79.6
170	Thakurgaon	Pirganj	50632	40788	80.6	241	Pirojpur	Nazirpur	32615	25950	79.6
171	Shariatpur	Janjira	38934	31363	80.6	242	Barguna	Bmna	14509	11540	79.5
172	Gaibandha	Gobindaganj	118861	95731	80.5	243	Sherpur	Nakla	42565	33850	79.5
173	Kustia	Bheramara	50566	40723	80.5	244	Gaibandha	Gaibandha Sadar	101677	80842	79.5
174	Madaripur	Shibchar	58737	47303	80.5	245	Meherpur	Gagni	77784	61840	79.5
175	Faridpur	Faridpur Sadar	94441	76021	80.5	246	Faridpur	Alphadanga	22831	18151	79.5
176	Kustia	Daulatpur	112833	90802	80.5	247	Rangpur	Pirgachha	74251	59018	79.5
177	Mymensingh	Mymensingh Sadar	136861	110136	80.5	248	Sylhet	Biswanath	31361	24924	79.5
178	Nilphamari	Jaldhaka	77837	62585	80.4	249	Kustia	Kumarkhali	74203	58957	79.5
179	Kurigram	Roumari	44169	35511	80.4	250	Rangamati	Langadu	16288	12939	79.4
180	Moulavi Bazar	Kulaura	58510	47040	80.4	251	Mymensingh	Fulbaria	85297	67753	79.4
181	Jessore	Abhaynagar	57433	46174	80.4	252	Manikganj	Harirampur	33026	26233	79.4
182	Faridpur	Char Bhadrashion	13231	10637	80.4	253	Gopalganj	Kasiani	45665	36267	79.4
183	Madaripur	Rajoir	47157	37903	80.4	254	Patuakhali	Patuakhali Sadar	69277	55005	79.4
184	Serajganj	Sirajganj Sadar	116526	93656	80.4	255	Bandarban	Alikadam	9319	7398	79.4
185	Naogaon	Atrai	47423	38109	80.4	256	Bhola	Charfashion	88700	70396	79.4
186	Jessore	Chowgachha	55667	44724	80.3	257	Thakurgaon	Haripur	31007	24608	79.4
187	Kurigram	Nageswari	95804	76960	80.3	258	Pirojpur	Mathbaria	47818	37921	79.3
188	Faridpur	Bhanga	53656	43094	80.3	259	Rangpur	Rangpur Sadar	142019	112619	79.3
189	Bagerhat	Chitalmari	27407	22009	80.3	260	Moulavi Bazar	Komolganj	45402	35978	79.2
190	Jhenaidaha	Harinakunda	44719	35904	80.3	261	Cox's Bazar	Ukhiya	35472	28102	79.2
191	Sylhet	Jaintapur	27748	22278	80.3	262	Kurigram	Bhurungamari	64033	50718	79.2
192	Shariatpur	Damoddy	22731	18250	80.3	263	Dinajpur	Fulbari	36879	29204	79.2
193	Gazipur	Sreepur	100668	80814	80.3	264	Comilla	Titash	37329	29551	79.2
194	Khulna	Paikgachha	57442	46095	80.2	265	Kurigram	Kurigram Sadar	74694	59124	79.2
195	Khulna	Dacope	30894	24791	80.2	266	Habiganj	Bahubal	33558	26562	79.2
196	Chandpur	Chandpur Sadar	72917	58510	80.2	267	Barisal	Gournadi	36327	28752	79.1
197	Gazipur	Tongi	34528	27689	80.2	268	Jhenaidaha	Jhenaidaha Sadar	97485	77157	79.1
198	Serajganj	Tarash	46117	36978	80.2	269	Feni	Dagonbhuiyan	51020	40368	79.1
199	Jhalakati	Naichhiti	35955	28826	80.2	270	Gopalganj	Muksudpur	60034	47497	79.1
200	Shariatpur	Goshairhat	30064	24102	80.2	271	Naogaon	Badalgachhi	48601	38445	79.1
201	Pabna	Bera	56188	45043	80.2	272	Jamalpur	Islampur	67591	53466	79.1
202	Rangamati	Rajasthali	4682	3753	80.2	273	Comilla	Barura	85011	67222	79.1
203	Khulna	Khulna Sadar	75750	60719	80.2	274	Naogaon	Rani Nagar	42800	33828	79.0
204	Pirojpur	Nesarabad	36957	29623	80.2	275	Narail	Narail Sadar	62744	49590	79.0
205	Serajganj	Ullahpara	122831	98452	80.2	276	Thakurgaon	Baliadangi	43354	34256	79.0
206	Rangamati	Kawkhali	11422	9155	80.2	277	Shariatpur	Bhedarganj	42740	33757	79.0
207	Gopalganj	Tungipara	21054	16870	80.1	278	Rajbari	Pangsha	89892	70996	79.0
208	Madaripur	Kalkini	53382	42752	80.1	279	Meherpur	Mujibnagar	24373	19244	79.0
209	Rajbari	Rajbari Sadar	69869	55947	80.1	280	Naogaon	Dhamoirhat	43778	34555	78.9

Sl. No	Name of District	Name of Upazila	Total Couples	Total Acceptors	CAR (%)	Sl. No	Name of District	Name of Upazila	Total Couples	Total Acceptors	CAR (%)
281	Faridpur	Modhukhali	44520	35140	78.9	352	Comilla	Laksham	55313	42916	77.6
282	Tangail	Mirzapur	94987	74948	78.9	353	Mymensingh	Gafargaon	86228	66865	77.5
283	Bandarban	Naikhongchhari	11259	8883	78.9	354	Lakshmpur	Ramgoti	40577	31459	77.5
284	Jhalakati	Rajapur	24075	18994	78.9	355	Noakhali	Begumganj	106437	82514	77.5
285	Moulavi Bazar	Moulavi Bazar Sadar	53661	42322	78.9	356	Sylhet	Golapganj	46565	36079	77.5
286	Moulavi Bazar	Barlekha	42657	33636	78.9	357	Bandarban	Lama	17824	13810	77.5
287	Dhaka	Mirpur	91093	71826	78.8	358	Pabna	Sujanagar	61205	47412	77.5
288	Kurigram	Fulbari	39219	30921	78.8	359	Comilla	Meghna	21759	16855	77.5
289	Narayanganj	Bandar	65350	51503	78.8	360	Narshingdi	Monohordi	56611	43809	77.4
290	Moulavi Bazar	Rajnagar	40513	31928	78.8	361	Khagrachhari	Khagrachhari Sadar	18152	14046	77.4
291	Mymensingh	Mukttagacha	92926	73222	78.8	362	Chandpur	Hajiganj	61991	47961	77.4
292	Barguna	Patharghata	32472	25583	78.8	363	Netrokona	Netrokona Sadar	70426	54463	77.3
293	Dhaka	Dhamrai	90135	71008	78.8	364	Bhola	Tajumuddin	24669	19077	77.3
294	Dinajpur	Kaharole	35764	28162	78.7	365	Chittagong	Banskhali	80812	62482	77.3
295	Brahmanbaria	Brahmanbaria Sadar	89218	70215	78.7	366	Narshingdi	Palash	41485	32068	77.3
296	Pirojpur	Kawkhali	12084	9509	78.7	367	Jhenaidaha	Sailkupa	83304	64389	77.3
297	Tangail	Gopalpur	59033	46430	78.7	368	Pabna	Bhangoora	29186	22558	77.3
298	Gazipur	Gazipur Sadar	117423	92303	78.6	369	Comilla	Comilla Sadar	87170	67352	77.3
299	Barisal	Bakerganj	64545	50725	78.6	370	Serajganj	Shazadpur	115019	88865	77.3
300	Gazipur	Kapasaria	69779	54835	78.6	371	Sylhet	South Shurma	52161	40288	77.2
301	Narshingdi	Shibpur	54444	42781	78.6	372	Rajbari	Goalunda Ghat	24873	19198	77.2
302	Mymensingh	Dhubaura	41025	32235	78.6	373	Brahmanbaria	Kashba	64308	49616	77.2
303	Mymensingh	Nandail	84270	66201	78.6	374	Sunamganj	Sadar (South)	27569	21267	77.1
304	Pirojpur	Zianagar	14627	11488	78.5	375	Netrokona	Atpara	29328	22623	77.1
305	Narayanganj	Narayanganj Sadar	195799	153754	78.5	376	Kustia	Khoksa	30888	23826	77.1
306	Barguna	Amtali	65528	51447	78.5	377	Rangpur	Mithapukur	118410	91297	77.1
307	Manikganj	Manikganj Sadar	68406	53699	78.5	378	Mymensingh	Phulpur	123640	95166	77.0
308	Pabna	Pabna Sadar	132941	104351	78.5	379	Mymensingh	Ishwarganj	79665	61372	77.0
309	Brahmanbaria	Ashuganj	27350	21466	78.5	380	Habiganj	Azmiriganj	20270	15598	77.0
310	Naogaon	Mohadebpur	70649	55437	78.5	381	Pirojpur	Pirojpur Sadar	27386	21068	76.9
311	Khulna	Batiaghata	37982	29800	78.5	382	Narshingdi	Belaboo	40524	31173	76.9
312	Comilla	Homna	39371	30888	78.5	383	Gaibandha	Shaghata	56621	43549	76.9
313	Sunamganj	Chhatak	52988	41555	78.4	384	Rangpur	Gangachara	67657	52019	76.9
314	Nawabganj	Gomostapur	62087	48679	78.4	385	Barisal	Agailjhara	28890	22211	76.9
315	Faridpur	Saltha	33497	26261	78.4	386	Serajganj	Chouhali	18892	14522	76.9
316	Habiganj	Madhabpur	62744	49176	78.4	387	Comilla	Monohargonj	47784	36718	76.8
317	Khulna	Terokhada	25464	19956	78.4	388	Tangail	Modhupur	113911	87527	76.8
318	Satkhira	Satkhira Sadar	93829	73528	78.4	389	Narayanganj	Rupganj	91268	70123	76.8
319	Pirojpur	Bhandaria	24621	19274	78.3	390	Sunamganj	Dharmapasa	42765	32852	76.8
320	Dinajpur	Khanshama	41438	32426	78.3	391	Bhola	Borhanuddin	49881	38308	76.8
321	Kustia	Mirpur	77708	60807	78.3	392	Sunamganj	Sulla	19485	14964	76.8
322	Netrokona	Durgapur	46339	36250	78.2	393	Chandpur	Sharasti	47732	36652	76.8
323	Satkhira	Kolaroa	53284	41669	78.2	394	Noakhali	Sudharam (Sadar)	86974	66761	76.8
324	Comilla	Chouddagram	86211	67413	78.2	395	Mymensingh	Gouripur	63827	48993	76.8
325	Mymensingh	Trisal	89065	69638	78.2	396	Sylhet	Jakiganj	34475	26462	76.8
326	Faridpur	Boalmari	55455	43358	78.2	397	Tangail	Basail	38545	29585	76.8
327	Rangpur	Taraganj	34188	26719	78.2	398	Rangpur	Badarganj	66596	51105	76.7
328	Chandpur	Hemchar	19073	14902	78.1	399	Bagerhat	Mollahat	27089	20780	76.7
329	Moulavi Bazar	Juri	24167	18869	78.1	400	Gazipur	Kaliganj	53063	40696	76.7
330	Jessore	Sarsa	79709	62229	78.1	401	Comilla	Chandina	75090	57584	76.7
331	Netrokona	Kendua	58533	45695	78.1	402	Kurigram	Ulipur	103269	79172	76.7
332	Mymensingh	Haluaghat	67704	52831	78.0	403	Noakhali	Hatiya	64682	49584	76.7
333	Chittagong	Rawzan	61775	48195	78.0	404	Noakhali	Sonaimuri	62045	47556	76.6
334	Noakhali	Kabirhat	30071	23458	78.0	405	Barisal	Barisal Sadar	82432	63167	76.6
335	Netrokona	Modan	26847	20916	77.9	406	Cox's Bazar	Kutubdia	22595	17295	76.5
336	Feni	Sonagazi	52733	41056	77.9	407	Comilla	Nangolkot	72086	55170	76.5
337	Comilla	Daudkandi	71304	55490	77.8	408	Khagrachhari	Mahalchhari	8904	6814	76.5
338	Jhenaidaha	Kaliganj	64706	50353	77.8	409	Lakshmpur	Kamalnarar	34257	26199	76.5
339	Chandpur	Motlab (North)	57255	44551	77.8	410	Rangamati	Belaichhari	4721	3609	76.4
340	Pabna	Ishwardi	71371	55531	77.8	411	Lakshmpur	Raipur	55662	42551	76.4
341	Khagrachhari	Dighinala	16880	13133	77.8	412	Barisal	Mehendiganj	54130	41369	76.4
342	Barisal	Uzirpur	46596	36232	77.8	413	Sylhet	Balaganj	50096	38244	76.3
343	Serajganj	Rayganj	67885	52782	77.8	414	Brahmanbaria	Sarail	51934	39638	76.3
344	Comilla	Comilla Sadar South	81658	63480	77.7	415	Munshiganj	Gazaria	30808	23512	76.3
345	Sunamganj	Dherai	40081	31155	77.7	416	Pabna	Chatmohor	72745	55491	76.3
346	Chittagong	Panchlaish	30891	24011	77.7	417	Sylhet	Gowainghat	49908	38064	76.3
347	Bandarban	Rowangchhari	4776	3712	77.7	418	Habiganj	Lakhai	28448	21695	76.3
348	Brahmanbaria	Bijoy Nagar	47702	37064	77.7	419	Khagrachhari	Ramgarh	12204	9304	76.2
349	Chandpur	Faridganj	82021	63720	77.7	420	Kurigram	Rajarhat	47992	36565	76.2
350	Comilla	Muradnagar	110347	85708	77.7	421	Chittagong	Mirsharai	80735	61505	76.2
351	Cox's Bazar	Ramu	43522	33779	77.6	422	Chandpur	Matlab (South)	43011	32759	76.2

Sl. No	Name of District	Name of Upazila	Total Couples	Total Acceptors	CAR (%)	Sl. No	Name of District	Name of Upazila	Total Couples	Total Acceptors	CAR (%)
423	Chittagong	Hathazari	71991	54824	76.2	455	Khagrachhari	Lakshmichhari	5516	4132	74.9
424	Munshiganj	Serajdikhan	55566	42264	76.1	456	Feni	Parshuram	19374	14508	74.9
425	Chittagong	Satkania	67437	51291	76.1	457	Barguna	Barguna Sadar	60828	45547	74.9
426	Barisal	Babuganj	27617	21003	76.1	458	Dhaka	Keraniganj	140622	105294	74.9
427	Sylhet	Fenchuganj	17247	13108	76.0	459	Brahmanbaria	Nasirnagar	55221	41270	74.7
428	Serajganj	Belkuchi	68411	51956	75.9	460	Dhaka	Tejgaon	179793	134253	74.7
429	Rajbari	Baliakandi	44456	33759	75.9	461	Munshiganj	Lohajong	31023	23159	74.7
430	Chittagong	Doublemooring	45161	34291	75.9	462	Feni	Fulgazi	22991	17163	74.7
431	Sylhet	Sylhet Sadar	90496	68611	75.8	463	Tangail	Shakhipur	70659	52731	74.6
432	Barisal	Banaripara	28887	21899	75.8	464	Chittagong	Sandwip	55143	41091	74.5
433	Cox's Bazar	Teknaf	46371	35149	75.8	465	Habiganj	Baniachhong	56900	42395	74.5
434	Bandarban	Ruma	4318	3273	75.8	466	Brahmanbaria	Akhaura	29110	21674	74.5
435	Noakhali	Senbag	52325	39658	75.8	467	Chittagong	Patiya	97562	72631	74.4
436	Chittagong	Chandlaish	43199	32733	75.8	468	Tangail	Delduar	47105	35062	74.4
437	Sylhet	Companiganj	26037	19723	75.7	469	Chandpur	Kachua	79122	58867	74.4
438	Narayanganj	Sonargaon	79368	60096	75.7	470	Chittagong	Fatichhari	101820	75249	73.9
439	Tangail	Nagarpur	66501	50347	75.7	471	Khagrachhari	Panchhari	10604	7817	73.7
440	Serajganj	Kamarkandi	28714	21735	75.7	472	Chittagong	Anwara	47284	34821	73.6
441	Rangamati	Barkal	7092	5367	75.7	473	Faridpur	Sadarpur	34275	25183	73.5
442	Lakshmipur	Ramganj	59094	44710	75.7	474	Chittagong	Sitakunda	74583	54770	73.4
443	Narayanganj	Araihazar	77908	58887	75.6	475	Munshiganj	Tongibari	37237	27332	73.4
444	Manikganj	Singair	61221	46187	75.4	476	Sylhet	Biani Bazar	35182	25785	73.3
445	Bhola	Monpura	15360	11584	75.4	477	Sylhet	Kanaighat	48056	35204	73.3
446	Cox's Bazar	Coxs Bazar Sadar	78808	59390	75.4	478	Feni	Feni Sadar	87143	63705	73.1
447	Brahmanbaria	Babinagar	89895	67738	75.4	479	Feni	Chhagalnaiya	35594	25735	72.3
448	Noakhali	Subarna Char	48312	36399	75.3	480	Bandarban	Thanchi	3806	2737	71.9
449	Narshingdi	Raipura	106695	80346	75.3	481	Munshiganj	Srinagar	56938	40838	71.7
450	Chittagong	Rangunia	71749	54009	75.3	482	Khagrachhari	Manikchhari	10584	7565	71.5
451	Lakshmipur	Lakshmipur Sadar	131217	98631	75.2	483	Noakhali	Chatkhil	45091	32122	71.2
452	Brahmanbaria	Bancharampur	56660	42557	75.1	484	Dhaka	Nawabganj	72978	51234	70.2
453	Pabna	Atghoria	34097	25585	75.0	485	Munshiganj	Munshiganj Sadar	77970	54593	70.0
454	Barisal	Muladi	31155	23355	75.0	486	Noakhali	Companiganj	47611	33114	69.6

Table :16

List of Upazila achieved CAR 60-69% & upto the end of November 2015

Sl. No.	Name of District	Name of Upazila	Total Couples	Total Acceptors	CAR (%)
1	Cox's Bazar	Pekua	30270	20003	66.1

Table :17

List of Upazila achieved CAR 0 to 59% upto the end of November 2015

Sl. No.	Name of District	Name of Upazila	Total Couples	Total Acceptors	CAR (%)
1	Dhaka	Dohar	46110	25316	54.9

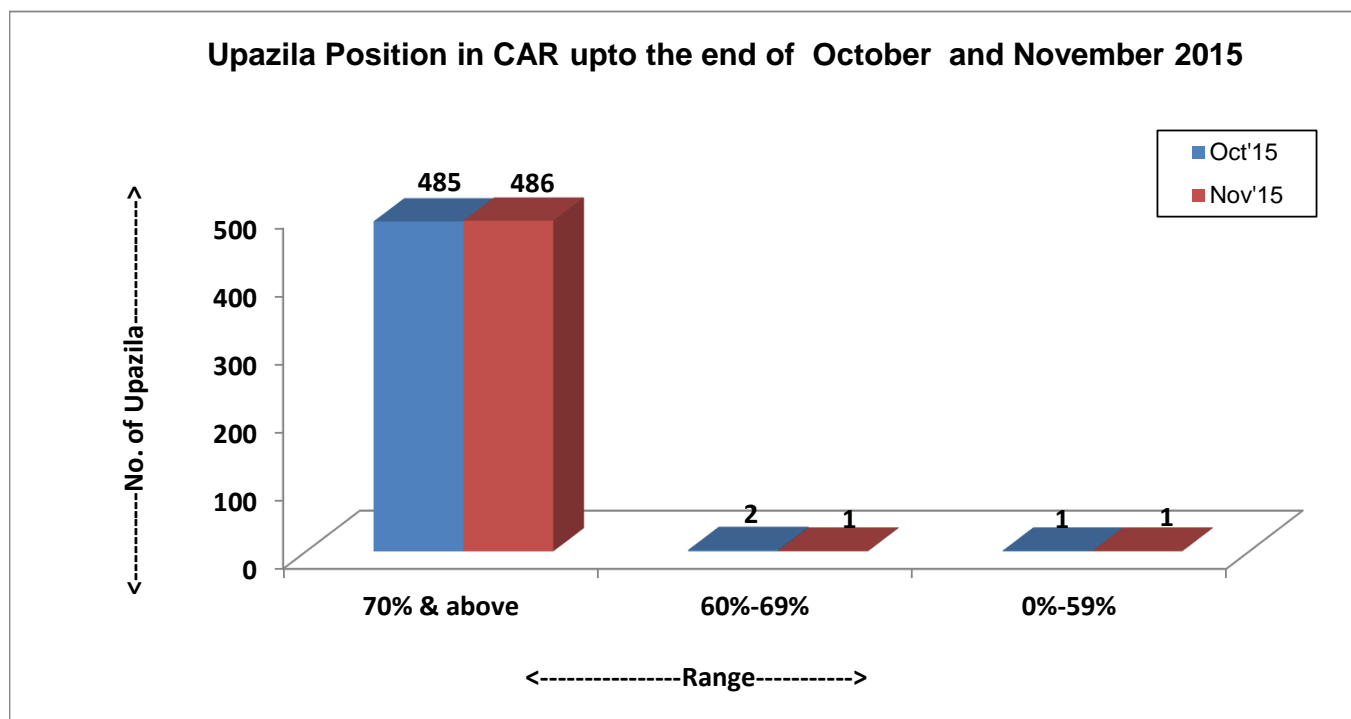


Table :18**Method wise Number of Dropout and Switch Over by Division upto the end of November 201**

Division	Number of Acceptors droppedout and Switch Over									
	Oral Pill		Condom		Injectable		IUD		Implant	
	No Method	Switch Over	No Method	Switch Over	No Method	Switch Over	No Method	Switch Over	No Method	Switch Over
Rangpur	11606	9988	2571	2666	5295	6202	1102	822	1605	1691
Rajshahi	13256	9601	5137	4096	9457	5639	803	649	1174	1475
Khulna	10418	8053	4104	3697	5577	5202	874	673	994	1112
Barisal	4835	3411	1353	934	3447	2744	592	392	658	510
Dhaka	23769	17507	8599	6800	10370	8999	2352	1653	2421	2410
Chittagong	13219	7723	5315	3099	7811	5145	1599	801	1342	871
Sylhet	6155	3522	2615	1469	2888	1933	628	353	659	367
National	83258	59805	29694	22761	44845	35864	7950	5343	8853	8436

Table :19**Contraceptive Acceptors and Acceptance Rate by Division up to the end of October and November 2015**

Division	Month	Total Eligible Couple	Total Number of Acceptors							CAR (%)
			Permanent Method	IUD	Implant	Injectable	Oral Pill	Condom	Total	
Rangpur	Oct'15	3591695	492083	66066	139062	642320	1399187	137113	2875831	80.1
	Nov'15	3593934	492521	66871	141579	643767	1398951	137907	2881596	80.2
Rajshahi	Oct'15	4188441	514025	105514	132230	634278	1694098	328862	3409007	81.4
	Nov'15	4191979	514757	105402	134931	635614	1696281	330934	3417919	81.5
Khulna	Oct'15	3490374	462147	91025	123180	582701	1300016	257304	2816373	80.7
	Nov'15	3491262	463372	91725	125568	583497	1300716	258552	2823430	80.9
Barisal	Oct'15	1632657	143439	54879	76475	365077	571474	75936	1287280	78.8
	Nov'15	1633348	144066	55609	78120	365176	572530	76832	1292333	79.1
Dhaka	Oct'15	7707727	791005	234553	279487	1054586	3125612	563000	6048243	78.5
	Nov'15	7712720	794701	238122	286048	1059394	3128844	567053	6074162	78.8
Chittagong	Oct'15	4861568	429449	179105	148824	860139	1775752	331444	3724713	76.6
	Nov'15	4868170	431051	181216	152453	863148	1780992	333752	3742612	76.9
Sylhet	Oct'15	1602178	198013	64875	53117	218878	585558	128543	1248984	78.0
	Nov'15	1603863	198934	64853	54730	220477	587187	129120	1255301	78.3
National	Oct'15	27074640	3030161	796017	952375	4357979	10451697	1822202	21410431	79.1
	Nov'15	27095276	3039402	803798	973429	4371073	10465501	1834150	21487353	79.3

Table :20**Status of Contraceptive Method-Mix based on CAR at the end of the Month of November 2015**

Method	Rangpur	Rajshahi	Khulna	Barisal	Dhaka	Chittagong	Sylhet	National
Permanent Method	17.1	15.1	16.4	11.1	13.1	11.5	15.8	14.1
I U D	2.3	3.1	3.2	4.3	3.9	4.8	5.2	3.7
Implant	4.9	3.9	4.4	6.0	4.7	4.1	4.4	4.5
Injectables	22.3	18.6	20.7	28.3	17.4	23.1	17.6	20.3
Oral Pill	48.5	49.6	46.1	44.3	51.5	47.6	46.8	48.7
Condom	4.8	9.7	9.2	5.9	9.3	8.9	10.3	8.5
Total	100.0	100.0	100.0	100.0	100.0	100.0	100.0	100.0

Method-Mix for the month of November 2015

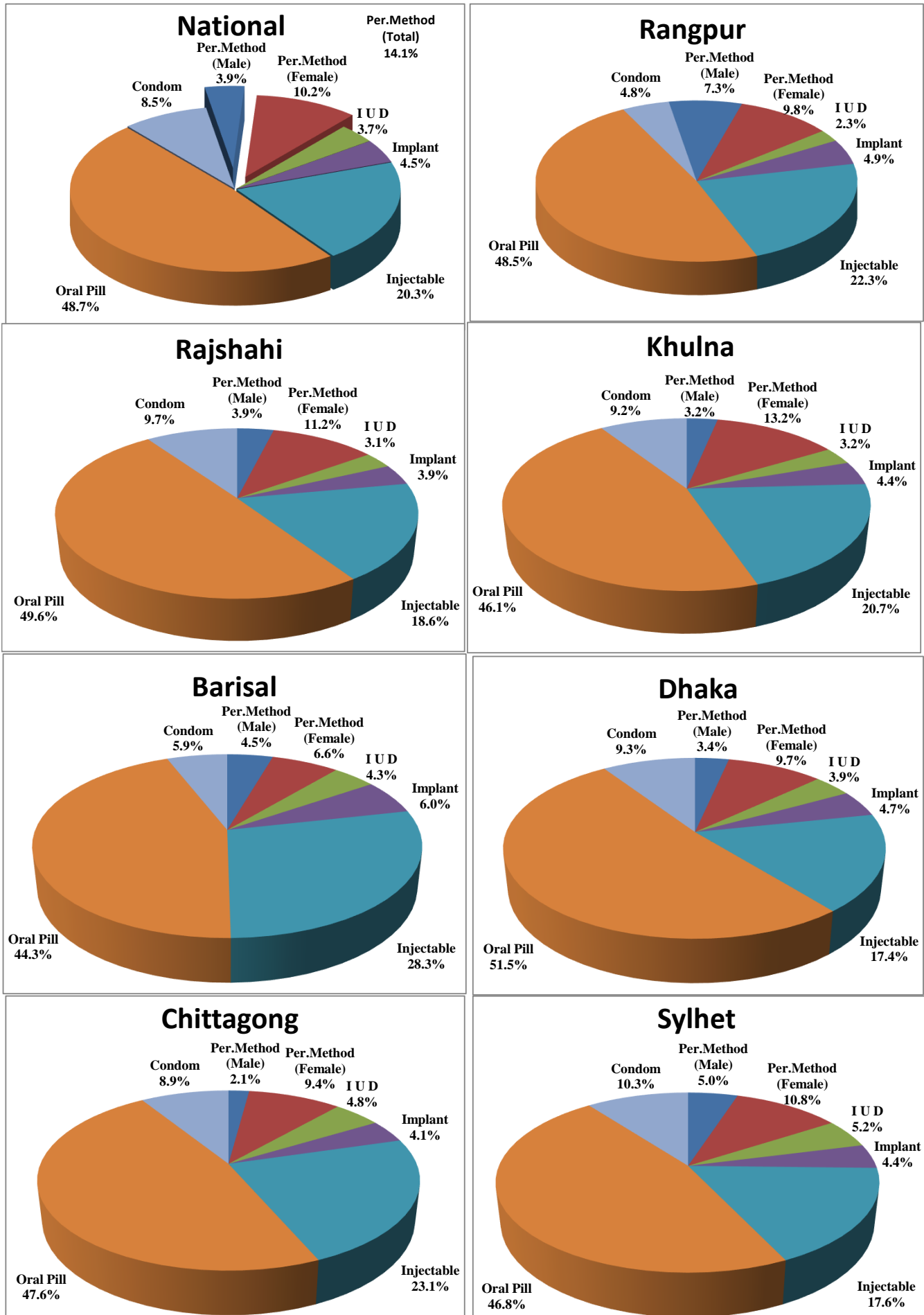


Table :21**Performance by type of MCH services for the month of October and November 2015**

(In Number)

Services	Performance		% Change of Nov'15 over Oct'15
	Oct'15	Nov'15	
Number of Pregnant Women (Registered by FWA)	843673	840042	-0.4
Referred High Risk Pregnant Mother	11787	13419	13.8
Antenatal Care			
1 st visit	204637	204627	0.0
2 nd visit	139657	142975	2.4
3 rd or more visits(including MCHTI, MFSTC & FWVTI)	146151	146694	0.4
Delivery (conducted in MCHTI, MFSTC, FWVTI, MCWC, UHC, UH&FWC) *	32354	31770	-1.8
Caesarian Operations (MCHTI, MFSTC, FWVTI, MCWC, FP & NGO Clinics)	5994	5829	-2.8
Postnatal Care (MCHTI, MFSTC, FWVTI, MCWC, UHC, UH&FWC)	145141	149483	3.0
Referred for RTI/STI (Adolescent Boys)	7594	8567	12.8
Referred for RTI/STI (Adolescent Girls)	11037	13861	25.6
Treatment of RTI/STI (MCHTI, MFSTC, FWVTI & MCWCs)	3527	3124	-11.4
TT for Women (15 - 49 Yrs.)			
1 st dose	123893	125031	0.9
2 nd dose	124125	123831	-0.2
3 rd dose	120154	120110	0.0
4 th dose	110223	110239	0.0
5 th dose	111401	109164	-2.0
Total TT	589796	588375	-0.2
Immunization			
Pentavalent 1 st dose	170429	172306	1.1
Pentavalent 2 nd dose	171891	173260	0.8
Pentavalent 3 rd or more dose	169232	172528	1.9
BCG (Vaccine)	158062	155866	-1.4
Measles (Vaccine)	193753	192397	-0.7
Child Care (Including MCHTI, MFSTC & FWVTI)			
0 - <1Yr.	280492	286583	2.2
1 - 5Yrs	547084	568736	4.0
Total Child Care	827576	855319	3.4
General Treatment	2889249	2872505	-0.6
Number of ECP acceptors	3720	4149	11.5
Number of MR done (Both Govt. & NGOs)	16877	16745	-0.8
Births			
Live Births (Home) by Trained Persons (collected by FWA)	60255	60516	0.4
Live Births (Home) by Non-trained Persons (collected by FWA)	16976	17236	1.5
Live Births (Clinic) (collected by FWA, conducted in MCH, DH, MCWC, UHC, FWC, NGO & Private clinic)	44017	45459	3.3
Total Births	121248	123211	1.6
Still Births (Including MCHTI, MFSTC & FWVTI)	224	205	-8.5
Deaths			
Neonatal Deaths (0 - 28 days)	697	636	-8.8
Infant Death (29 days - 1Yer)	179	207	15.6
Child Death (1 - 5Yrs.)	334	280	-16.2
Maternal Deaths	75	79	5.3
Other Deaths	23632	26205	10.9
Total Deaths	24917	27407	10.0

* See Page - 10 for clarification

Annex - A

Summary of the Couples and Acceptors by Month since June 2015

Indicators	Jun'15	Jul'15	Aug'15	Sep'15	Oct'15	Nov'15
Number of Total Couples	26984930	27001051	27095276	27047665	27074640	27095276
Number of Total Acceptors	21289187	21303961	21487353	21369698	21410431	21487353
Method Specific Acceptors						
Permanent Method (Male)	826660	828802	839921	834171	836654	839921
Permanent Method (Female)	2169504	2172597	2199481	2186300	2193507	2199481
Permanent Method (Total)	2996164	3001399	3039402	3020471	3030161	3039402
IUD (Users)	792770	791632	803798	794521	796017	803798
Implant (Users)	921206	922051	973429	941591	952375	973429
Injectable (Users)	4337036	4341405	4371073	4351259	4357979	4371073
Oral Pill (Acceptors)	10420823	10428494	10465501	10442064	10451697	10465501
Condom (Acceptors)	1821188	1818980	1834150	1819792	1822202	1834150
CAR (Contraceptive Acceptance Rate)	78.9	78.9	79	79	79.1	79.3
Number of Districts reported	64	64	64	64	64	64
Number of Upazilas reported	488	488	488	488	488	488
Method Specific absolute performance by month since June 2015						
Indicators	Jun'15	Jul'15	Aug'15	Sep'15	Oct'15	Nov'15
Permanent Method (Male, Cases)	5591	4665	8023	10567	6634	8023
Permanent Method (Female, Cases)	6534	6487	11539	11303	9814	11539
Permanent Method (Total, Cases)	12125	11152	19562	21870	16448	19562
I U D (in cases)	14526	14118	33841	19631	16393	33841
Implant (Cases)	17241	14040	49957	37543	32542	49957
Injectables (Doses)	1123878	1064175	1167668	1199500	1110540	1167668
Oral Pill (Cycles)	8521579	8562070	8579372	8977081	8460682	8579372
Condom (Pieces)	11320282	11228171	12439740	12647880	11771613	12439740
Performance by types of MCH services by month since June 2015						
Services	Jun'15	Jul'15	Aug'15	Sep'15	Oct'15	Nov'15
Number of Pregnant Women (Registered by FWA)	842233	841756	845717	848887	841208	840042
Referred High Risk Pregnant Mother	11806	11781	12455	28572	11787	13419
Antenatal Care						
1 st visit	184592	174738	212376	184978	204637	204627
2 nd visit	136637	131125	140156	141143	139657	142975
3 rd or more visits(including MCHTI, MFSTC & FWVTI)	145814	137036	146368	142198	146151	146694
Delivery (conducted in MCHTI, MFSTC, FWVTI, MCWC, UHC, UH&FWC) *	29354	30177	31875	31490	32354	31770
Caesarian Operations (MCHTI, MFSTC, FWVTI, MCWC, FP & NGO Clinics)	5093	5466	5865	5998	5994	5829
Postnatal Care (MCHTI, MFSTC, FWVTI, MCWC, UHC, UH&FWC)	136809	138545	144663	140573	145141	149483
Referred for RTI/STI (Adolescent Boys)	7373	6992	7912	7268	7594	8567
Referred for RTI/STI (Adolescent Girls)	11434	10419	10874	12140	11037	13861
Treatment of RTI/STI (MCHTI, MFSTC, FWVTI & MCWCs)	3276	2803	3978	3150	3527	3124

Services	Jun'15	Jul'15	Aug'15	Sep'15	Oct'15	Nov'15
TT for Women (15 - 49 Yrs.)						
1st dose	121394	116943	125427	121556	123893	125031
2nd dose	120935	115507	119965	121450	124125	123831
3rd dose	116959	114118	120569	118154	120154	120110
4th dose	107639	105847	111111	109474	110223	110239
5th dose	105244	103296	109560	106776	111401	109164
Total TT	572171	555711	586632	577410	589796	588375
Immunization						
DPT 1st dose	160852	156856	169307	162547	170429	172306
DPT 2nd dose	161376	157209	166234	167757	171891	173260
DPT 3rd dose	163471	158457	164369	160809	169232	172528
BCG (Vaccine)	140359	143138	159637	150606	158062	155866
Measles (Vaccine)	185390	180733	193297	186793	193753	192397
Child Care (Including MCHTI, MFSTC & FWVTI)						
0 - <1Yr.	259100	251699	287171	261301	280492	286583
1 - 5Yrs	500813	508227	580684	518418	547084	568736
Total Child Care	759913	759926	867855	779719	827576	855319
General Treatment	2668910	2570656	3015781	2672020	2889249	2872505
Number of ECP acceptors	934	1110	2432	3024	3720	4149
Number of MR done (Both Govt. & NGOs)	19095	15916	18179	41849	16877	16745
Births						
• Live Births (Home) by Trained Persons (collected by FWA)	57775	56978	59432	58157	60255	60516
• Live Births (Home) by Non-trained Persons (collected by FWA)	16176	15863	16671	16288	16976	17236
• Live Births (Clinic) (collected by FWA, conducted in MCH, DH, MCWC, UHC, UH&FWC, NGO & Private clinic)	40044	40060	43578	43118	44017	45459
Total Births	113995	112901	119681	117563	121248	123211
Still Births (Including MCHTI, MFSTC & F	224	249	272	205	224	205
Deaths						
Neonatal Deaths (0 - 28 days)	663	629	745	647	697	636
Infant Death (29 days - 1Yer)	155	107	214	136	179	207
Child Death (1 - 5Yrs.)	256	282	366	298	334	280
Maternal Deaths	63	60	78	71	75	79
Other Deaths	21373	21783	23660	22194	23632	26205
Total Deaths	22510	22861	25063	23346	24917	27407

* See Page - 10 for clarification

Annex - B

Performance of RH-EOC of MCWCs, MCHTI & MFSTC for the month of November 2015

SL #	Name of MCWC	Status	ANC (1st visit)	ANC (total)	PNC	Delivery (total)	C-section	Gen. Pt	RTI/ STI	Med. tr	Child Care		S.B	IUFD	MR	Immunization	Tubectomy	NSV	Implant	IUD	Injectable	Oral pill (person)	Condom (person)
											0-1yr	1-5yr											
Rajshahi Division																							
1	Bogra	C- EOC	294	488	146	116	28	767	5	0	238	288	0	3	0	116	9	0	68	24	64	47	48
2	Dupchacia, Bogra	B-EOC	40	54	30	30	0	843	18	0	82	158	0	0	0	13	13	10	103	7	20	24	8
3	Naogaon	C-EOC	151	320	49	31	4	972	12	3	119	298	0	0	1	302	63	2	130	2	4	135	135
4	Joypurhat	C- EOC	167	295	31	12	0	1382	17	0	185	432	0	0	8	649	50	1	121	5	80	87	72
5	Rajshahi	C- EOC	258	1001	150	78	26	884	84	4	125	213	0	0	8	0	13	0	16	20	46	19	10
6	Natore	C- EOC	182	357	79	78	8	247	24	4	38	219	0	0	7	607	52	2	85	2	14	240	138
7	Pabna	C- EOC	340	866	340	191	30	1269	112	2	440	538	0	2	15	238	7	4	29	24	135	85	68
8	Sirajganj	C- EOC	264	435	110	69	14	697	81	774	72	260	0	0	17	0	15	5	124	5	29	48	46
9	Chapai-Nawabganj	C- EOC	274	474	60	48	2	484	0	2	102	205	0	0	10	0	53	10	45	14	168	182	60
Rangpur Division																							
10	Rangpur	C- EOC	101	381	161	38	22	677	152	0	206	180	0	0	10	0	5	54	184	38	309	144	36
11	Dinajpur	C- EOC	150	506	90	29	7	696	30	2	72	179	0	0	4	535	2	0	17	5	85	66	33
12	Thakurgaon	C- EOC	221	613	396	132	49	1005	49	7	199	270	0	2	11	183	9	9	252	24	148	59	29
13	Gaibandha	C-EOC	369	632	371	311	16	760	148	33	390	179	0	2	17	0	40	60	422	18	19	32	12
14	Nilphamari	C- EOC	324	646	93	65	0	1034	58	10	144	300	0	3	31	0	43	42	154	13	135	105	42
15	Syedpur, Nilphamari	C- EOC	99	222	74	88	0	525	18	18	115	231	0	1	14	0	23	4	199	37	242	176	36
16	Kurigram	C-EOC	162	292	95	67	5	521	66	6	93	116	0	0	32	300	19	15	99	20	90	143	23
17	Lalmonirhat	C- EOC	161	451	125	43	0	805	40	9	220	380	0	0	10	597	22	10	134	17	142	86	20
18	Panchagore	C-EOC	198	427	231	86	3	650	19	7	115	178	0	0	12	374	23	17	58	14	72	9	6
19	Boda, Panchagar	C-EOC	107	167	50	36	6	376	30	20	80	132	0	0	10	0	25	35	149	20	189	51	6
Dhaka Division																							
20	Narayanganj	C- EOC	235	417	63	26	11	334	31	0	176	187	0	0	21	0	7	20	11	9	188	154	89
21	Munshiganj	C- EOC	178	383	63	27	1	383	8	1	36	85	0	0	14	161	45	0	195	12	145	74	38
22	Manikganj	C- EOC	420	697	175	57	31	457	38	105	84	200	0	0	50	402	21	91	166	4	85	618	142
23	Narsingdi	C-EOC	720	1450	420	110	35	1320	76	8	501	510	0	0	9	360	29	2	107	30	132	203	22
24	Tangail	C-EOC	280	371	133	44	29	1335	35	0	122	204	0	0	5	422	76	4	43	24	107	94	20
25	Sherpur	C-EOC	228	355	115	80	5	446	24	0	159	304	0	0	19	0	49	39	192	18	66	90	19
26	Mymensingh	C-EOC	327	737	317	122	16	1321	73	1	253	493	2	0	30	141	8	57	279	42	41	59	32
27	Kishoreganj	C- EOC	270	417	125	67	11	592	19	0	83	235	0	3	30	124	68	2	125	25	133	505	193
28	Jamalpur	C- EOC	174	320	85	58	6	733	12	4	84	203	1	0	7	264	46	14	365	12	128	216	92
29	Netrokona	C-EOC	280	522	65	45	0	411	10	1	300	400	2	0	5	767	48	20	188	5	69	85	55
30	Rajbari	C- EOC	242	465	81	46	13	982	72	19	106	223	0	0	9	1001	11	14	182	13	8	32	34
31	Faridpur	C- EOC	108	167	113	36	11	354	44	0	79	318	0	0	28	214	14	0	55	15	245	176	50
32	Madaripur	C- EOC	194	444	56	54	23	1404	38	3	47	180	0	0	3	0	21	0	13	2	300	328	300
33	Gopalganj	C- EOC	45	67	17	10	6	700	14	0	64	134	0	0	14	0	56	0	57	1	31	166	40
Khulna Division																							
34	Jessore	C- EOC	171	371	70	33	10	611	24	1	209	103	0	0	18	401	36	3	85	13	27	68	49
35	Magura	C- EOC	183	298	58	34	0	810	32	1	95	230	0	1	12	0	24	0	214	22	105	128	21
36	Narail	C-EOC	164	206	65	45	7	1013	18	5	134	208	0	0	0	192	35	5	148	28	2	35	32

SL #	Name of MCWC	Status	ANC (1st visit)	ANC (total)	PNC	Delivery (total)	C-section	Gen. Pt	RTI/ STI	Med. tr	Child Care		S.B	IUFD	MR	Immunization	Tubec tomy	NSV	Implant	IUD	Injectable	Oral pill (person)	Condom (person)
											0-1yr	1-5yr											
37	Jhenaidah	C-EOC	185	637	162	43	4	1221	158	8	196	331	0	0	52	87	51	0	172	43	219	327	190
38	Meherpur	C- EOC	64	135	47	21	0	617	21	13	154	181	0	0	7	208	46	0	19	4	13	12	22
39	Chuadanga	C-EOC	236	531	73	80	27	865	14	19	87	210	0	2	6	212	53	0	74	9	88	42	30
40	Khulna	C-EOC	160	604	108	53	26	678	4	0	243	177	0	0	0	604	17	0	19	72	44	89	73
41	Bagerhat	C-EOC	101	139	33	39	5	807	80	4	555	1212	2	0	10	581	33	8	121	17	73	146	31
42	Satkhira	C- EOC	191	515	51	10	0	1302	212	4	128	513	0	0	17	206	47	3	114	25	111	108	101
43	Nalta,Kaliganj, Satkhira	B-EOC	99	242	72	35	0	752	7	0	115	289	0	0	1	0	25	0	60	9	13	6	9
44	Kustia	C-EOC	148	243	126	34	10	481	36	11	155	161	0	0	3	122	7	1	38	10	38	23	37
45	Kumarkhali, Kustia	C- EOC	160	217	14	40	0	305	25	5	70	114	0	1	0	217	6	4	47	9	8	74	34
Barisal Division																							
46	Barisal	C-EOC	68	147	22	16	7	430	23	47	85	144	0	0	6	260	3	4	33	7	73	423	68
47	Gournadi, Barisal	C-EOC	16	39	12	11	0	411	18	0	31	100	0	0	14	26	21	2	40	12	72	24	4
48	Bhola	C-EOC	78	159	63	80	12	566	24	12	96	160	0	0	0	0	11	0	235	5	28	49	13
49	Lalmohon, Bhola	C- EOC	101	145	52	92	0	474	22	5	46	136	1	0	0	6	27	108	5	17	37	3	7
50	Barguna	C-EOC	51	139	34	13	0	861	22	8	69	193	0	0	5	32	1	25	135	9	31	48	7
51	Pirojpur	C- EOC	237	386	67	50	19	49	43	4	24	138	0	0	10	0	44	4	84	24	179	285	29
52	Jhalokhati	C-EOC	82	156	39	30	3	1178	12	7	206	240	0	1	31	192	31	3	132	9	226	193	39
53	Patuakhali	C- EOC	162	386	92	46	12	591	62	1	84	205	0	1	26	326	28	6	127	43	226	158	31
Chittagong Division																							
54	Cox's Bazar	C- EOC	225	1004	150	54	0	1307	87	4	661	352	0	0	3	443	10	25	34	8	198	132	28
55	Khagrachari	C- EOC	16	26	15	43	6	0	38	1	66	48	0	0	0	0	4	9	19	1	59	40	9
56	Bandarban	C- EOC	40	105	48	20	0	430	50	0	68	104	0	0	8	132	1	16	21	19	171	238	70
57	Rangamati	C- EOC	104	165	61	41	14	4	15	4	75	97	0	1	18	850	3	20	72	21	49	100	14
58	B. Baria	C- EOC	306	435	118	70	0	632	15	5	612	203	0	0	5	1598	26	31	84	40	107	229	65
59	Comilla	C- EOC	114	746	47	35	8	487	121	0	187	172	0	0	12	1808	2	5	54	7	126	195	104
60	Nangalkot, Comilla	B-EOC	90	101	80	71	0	99	32	0	26	36	0	0	3	0	29	9	99	21	12	15	6
61	Feni	C- EOC	483	853	151	101	12	2478	50	2	277	241	0	0	43	0	5	9	47	40	51	79	39
62	Chandpur	C- EOC	301	726	30	53	21	1174	35	0	144	215	0	1	10	137	32	7	131	41	204	222	41
63	Laxmipur	C- EOC	340	534	160	92	3	185	6	0	106	17	0	3	17	320	50	0	78	64	71	351	129
64	Noakhali	C-EOC	23	43	16	9	0	318	27	0	50	72	0	0	0	0	13	2	29	9	22	23	16
65	Begumganj, Noakhali	C-EOC	73	115	23	33	0	169	31	1	22	82	0	0	1	0	39	4	108	15	104	175	23
66	Pauchuria, Patiya	C- EOC	132	219	55	38	0	537	22	0	40	83	0	0	5	0	2	0	21	24	11	3	4
Sylhet Division																							
67	Sylhet	C-EOC	15	17	14	5	0	452	39		24	214	0	0	0	23	15	1	17	5	35	47	5
68	Hobiganj	C- EOC	203	279	99	66	5	796	48	8	77	268	0	2	21	297	38	6	93	22	49	97	37
69	Sunamganj	C-EOC	79	301	133	59	13	525	22	0	23	250	0	1	15	272	38	9	170	7	46	69	19
70	Moulavibazar	C- EOC	225	319	112	56	21	698	7	5	176	291	0	1	0	555	27	1	59	7	218	170	36
Others :																							
71	MCHTI , Dhaka	C-EOC	751	2680	663	132	261	0	0	0	1285	1238	0	4	19	1574	25	275	44	181	80	179	199
72	MFSTC, Dhaka	C-EOC	859	2515	346	363	273	1845	123	0	1385	470	0	0	81	3098	30	150	72	75	99	16	54
73	FWVTI, Rajshahi	C-EOC	97	365	117	44	18	624	37	9	25	75	0	0	0	3	18	0	16	19	41	59	44
74	Agrabad, Ctg	B-EOC	27	51	9	3	0	377	5	0	18	53	0	0	7	0	6	5	50	12	31	60	14
Total			14723	32733	8216	4523	1215	52525	3124	1237	13258	18058	8	35	947	22546	1923	1222	7690	1534	7046	9312	3733

Annex - C
City Corporation wise Contraceptive Performance (Part of the City Corporation) for
the month of November 2015

Name of the City Corporation	Oral Pill (Cycle)	Condom (Pieces)	Injectable (Vial)	IUD (Cases)	Implant (Nos)	Permanent Method		
						Male	Female	Total
Rangpur City Corporation	17610	31849	4869	110	211	107	120	227
Rangpur Division	17610	31849	4869	110	211	107	120	227
Rajshahi City Corporation	12195	192644	4050	86	210	313	118	431
Rajshahi Division	12195	192644	4050	86	210	313	118	431
Khulna City Corporation	53708	203822	10876	202	211	181	137	318
Khulna Division	53708	203822	10876	202	211	181	137	318
Barisal City Corporation	11621	51902	2157	67	141	107	49	156
Barisal Division	11621	51902	2157	67	141	107	49	156
Dhaka City Corporation	84152	329119	19992	805	760	723	243	966
Gazipur City Corporation	55409	153557	5159	266	339	133	75	208
Narayanganj City Corporation	31107	56778	4668	75	25	34	9	43
Dhaka Division	170668	539454	29819	1146	1124	890	327	1217
Chittagong City Corporation	31591	139654	12251	302	686	225	62	287
Comilla City Corporation	6938	25774	1641	68	117	26	10	36
Chittagong Division	38529	165428	13892	370	803	251	72	323
Sylhet City Corporation	9980	26030	783	5	17	5	33	38
Sylhet Division	9980	26030	783	5	17	5	33	38
Total	314311	1211129	66446	1986	2717	1854	856	2710

Annex - D
Contraceptive Acceptors and Acceptance Rate (CAR) of Part of the City Corporation Area
end of the month of November 2015

Name of the City Corporation	Condom	Injectable	I U D	Implant	Permanent Method			Total Acceptors	CAR(%)
					Male	Female	Total		
Rangpur City Corporation	11240	19530	1300	3734	3209	6027	9236	86962	79.352
Rangpur Division	11240	19530	1300	3734	3209	6027	9236	86962	79.352
Rajshahi City Corporation	24612	15751	935	1684	583	5678	6261	87246	85.049
Rajshahi Division	24612	15751	935	1684	583	5678	6261	87246	85.049
Khulna City Corporation	25060	17462	3879	6049	4905	4744	9649	110475	81.579
Khulna Division	25060	17462	3879	6049	4905	4744	9649	110475	81.579
Barisal City Corporation	4363	1850	365	1140	211	804	1015	19252	75.288
Barisal Division	4363	1850	365	1140	211	804	1015	19252	75.288
Dhaka City Corporation	16289	18049	3244	4203	3825	6719	10544	92552	77.014
Gazipur City Corporation	12205	14816	3826	3863	2135	9679	11814	100853	78.683
Narayanganj City Corporation	11702	16399	2729	3402	3479	5905	9384	84423	77.993
Dhaka Division	40196	49264	9799	11468	9439	22303	31742	277828	77.911
Chittagong City Corporation	10347	9297	3103	4265	1886	3866	5752	61036	76.712
Comilla City Corporation	2189	1992	824	667	543	559	1102	12543	78.453
Chittagong Division	12536	11289	3927	4932	2429	4425	6854	73579	77.003
Sylhet City Corporation	3326	3041	468	1129	632	2215	2847	21290	76.926
Sylhet Division	3326	3041	468	1129	632	2215	2847	21290	76.926
Total	121333	118187	20673	30136	21408	46196	67604	676632	79.325

Annex - E

City Corporation wise MCH Performance (Part of the City Corporation) for the month of November 2015

Name of the City Corporation	Reproductive Health Services													
	Total Pregnant Women	Ref. High Risk Preg.Mother	Sterile Couple		Number of Adolescent (Girl)						No. of Attac.RTI/STI		No. of Referred RTI/STI	
			Advised	Referred	Anemic	Referred Anemic	Iodine deficiency	Ref. Iodine deficiency	Attac. Dysmenorrhoea	Ref.Attc. Dysmenorrhoea	Adolescent Boy	Adolescent Girl	Adolescent Boy	Adolescent Girl
Rangpur City Corporation	6079	84	688	66	531	48	127	43	129	16	209	1283	44	44
Rangpur Division	6079	84	688	66	531	48	127	43	129	16	209	1283	44	44
Rajshahi City Corporation	2434	84	36	0	429	22	25	12	247	10	354	497	8	113
Rajshahi Division	2434	84	36	0	429	22	25	12	247	10	354	497	8	113
Khulna City Corporation	11810	134	198	1813	1309	40	13	781	1772	30	388	3472	0	108
Khulna Division	11810	134	198	1813	1309	40	13	781	1772	30	388	3472	0	108
Barisal City Corporation	1170	0	8	10	181	7	30	0	241	0	481	76	8	24
Barisal Division	1170	0	8	10	181	7	30	0	241	0	481	76	8	24
Dhaka City Corporation	2063	724	206	32	2894	34	33	0	1454	44	986	3125	31	334
Gazipur City Corporation	2468	141	105	32	735	93	228	12	290	52	398	475	78	97
Narayanganj City Corporation	1721	27	235	83	230	68	43	18	106	28	55	143	36	47
Dhaka Division	6252	892	546	147	3859	195	304	30	1850	124	1439	3743	145	478
Chittagong City Corporation	1417	136	49	3	1143	25	54	8	442	18	644	2141	31	567
Comilla City Corporation	138	172	6	0	266	17	0	0	100	5	78	673	0	0
Chittagong Division	1555	308	55	3	1409	42	54	8	542	23	722	2814	31	567
Sylhet City Corporation	874	1	39	15	57	8	39	8	12	0	49	15	7	10
Sylhet Division	874	1	39	15	57	8	39	8	12	0	49	15	7	10
Total	30174	1503	1570	2054	7775	362	592	882	4793	203	3642	11900	243	1344

Annex - E

City Corporation wise MCH Performance for the month of November 2015

Name of the City Corporation	Reproductive Health Services									No. of Children (0 - 5) years Received Services				
	No. of Advised for RTI/STI/HIV/AIDS	No. of Women Received TT					Received ECP	Number of Misprost of Acceptor	M.R. Done	No. of Children (0 - 1) years Received Vaccin				
		1st Dose	2nd Dose	3rdt Dose	4th Dose	5th Dose				BCG	Pentavalent 1st	Pentavalent 2nd	Pentavalent 3 and more	Measles
Rangpur City Corporation	4209	234	214	213	168	130	20	121	356	380	314	284	287	307
Rangpur Division	4209	234	214	213	168	130	20	121	356	380	314	284	287	307
Rajshahi City Corporation	2332	160	125	113	126	149	0	50	111	446	378	359	408	367
Rajshahi Division	2332	160	125	113	126	149	0	50	111	446	378	359	408	367
Khulna City Corporation	5390	454	577	537	422	426	14	17	280	1074	1332	1264	1238	1226
Khulna Division	5390	454	577	537	422	426	14	17	280	1074	1332	1264	1238	1226
Barisal City Corporation	2889	57	81	43	53	48	4	0	377	169	320	315	199	249
Barisal Division	2889	57	81	43	53	48	4	0	377	169	320	315	199	249
Dhaka City Corporation	10238	1300	1469	1186	870	2300	44	57	1471	4543	5373	5777	5071	5631
Gazipur City Corporation	5219	1169	1333	1034	846	915	25	302	352	1723	1993	1907	1879	2054
Narayanganj City Corporation	304	412	409	338	320	341	17	62	29	439	458	477	509	449
Dhaka Division	15761	2881	3211	2558	2036	3556	86	421	1852	6705	7824	8161	7459	8134
Chittagong City Corporation	4514	844	689	383	387	370	2	36	677	1201	1761	1668	1558	1762
Comilla City Corporation	2160	123	130	111	88	107	0	23	239	290	363	346	278	829
Chittagong Division	6674	967	819	494	475	477	2	59	916	1491	2124	2014	1836	2591
Sylhet City Corporation	40	54	54	52	47	38	0	9	5	66	74	81	78	54
Sylhet Division	40	54	54	52	47	38	0	9	5	66	74	81	78	54
Total	37295	4807	5081	4010	3327	4824	126	677	3897	10331	12366	12478	11505	12928

Name of the City Corporation	No. of Children (0 - 5) years Received Services										No. of Children Received Other Services	
	Received Vaccin (0-5) year					Referred Children			Attacked by Night Blindness		Under 1 year	1-5 years
	Received Polio	Received Vitamin-A	Attacked by ARI	Attacked by Diarrhoea	Attacked by Malnutrition	ARI	Diarrhoea	Malnutrition	Boy	Girl		
Rangpur City Corporation	1043	236	854	385	164	26	15	23	7	5	1081	1301
Rangpur Division	1043	236	854	385	164	26	15	23	7	5	1081	1301
Rajshahi City Corporation	906	306	1025	675	103	127	62	46	0	0	1051	1342
Rajshahi Division	906	306	1025	675	103	127	62	46	0	0	1051	1342
Khulna City Corporation	3816	15544	3947	3472	945	604	297	24	4	0	4205	5841
Khulna Division	3816	15544	3947	3472	945	604	297	24	4	0	4205	5841
Barisal City Corporation	482	2120	547	357	276	0	20	25	0	0	1269	965
Barisal Division	482	2120	547	357	276	0	20	25	0	0	1269	965
Dhaka City Corporation	17848	43155	7415	4892	1527	139	109	86	1	1	21763	18701
Gazipur City Corporation	6354	9095	1296	525	478	130	85	119	0	0	2241	2481
Narayanganj City Corporation	1574	186	359	89	104	41	48	57	7	7	374	640
Dhaka Division	25776	52436	9070	5506	2109	310	242	262	8	8	24378	21822
Chittagong City Corporation	5165	18347	3963	2007	271	55	24	0	0	0	6437	6394
Comilla City Corporation	1179	5034	1251	535	83	2	0	0	0	0	649	748
Chittagong Division	6344	23381	5214	2542	354	57	24	0	0	0	7086	7142
Sylhet City Corporation	231	39	68	15	43	0	0	0	4	2	33	232
Sylhet Division	231	39	68	15	43	0	0	0	4	2	33	232
Total	38598	94062	20725	12952	3994	1124	660	380	23	15	39103	38645

City Corporation wise MCH Performance for the month of November 2015

Name of the City Corporation	Mother Care							Birth				
	Antenatal Care			Delivery			Postnatal Care	No. of Still Birth	No. of live birth			
	1st Inspection	2nd Inspection	3rd & more Inspection	Normal	Caesarian	Other			At Home (By trained person)	At Home (By Non-trained person)	UH&FWc/MCWC/ Clinic /Hospital	Total
Rangpur City Corporation	1512	1226	1871	127	136	11	1198	4	224	30	105	359
Rangpur Division	1512	1226	1871	127	136	11	1198	4	224	30	105	359
Rajshahi City Corporation	2822	3054	1430	213	151	0	1446	0	21	0	362	383
Rajshahi Division	2822	3054	1430	213	151	0	1446	0	21	0	362	383
Khulna City Corporation	3417	3102	5238	310	125	2	4173	0	245	68	772	1085
Khulna Division	3417	3102	5238	310	125	2	4173	0	245	68	772	1085
Barisal City Corporation	706	467	532	66	47	0	554	0	7	5	38	50
Barisal Division	706	467	532	66	47	0	554	0	7	5	38	50
Dhaka City Corporation	8387	6760	7948	527	588	42	7626	0	81	7	113	201
Gazipur City Corporation	2069	1188	1344	168	138	25	1200	0	156	30	182	368
Narayanganj City Corporation	447	230	200	39	11	0	126	0	127	35	112	274
Dhaka Division	10903	8178	9492	734	737	67	8952	0	364	72	407	843
Chittagong City Corporation	4920	3528	5982	540	409	25	5324	0	61	7	73	141
Comilla City Corporation	547	518	839	55	35	0	588	0	7	0	3	10
Chittagong Division	5467	4046	6821	595	444	25	5912	0	68	7	76	151
Sylhet City Corporation	37	23	28	5	0	0	25	0	46	25	90	161
Sylhet Division	37	23	28	5	0	0	25	0	46	25	90	161
Total	24864	20096	25412	2050	1640	105	22260	4	975	207	1850	3032

Name of the City Corporation	Death								General patient		
	Number of Death								Male	Female	Total
	No. of Child >1 year				No. of Child 1->5 years	Number of Maternal death	Other Death	Total Death			
0-7 days	8-28 days	29days - >1 year	Total								
Rangpur City Corporation	0	0	0	0	0	1	54	55	3643	9578	13221
Rangpur Division	0	0	0	0	0	1	54	55	3643	9578	13221
Rajshahi City Corporation	0	0	0	0	0	0	31	31	3656	21170	24826
Rajshahi Division	0	0	0	0	0	0	31	31	3656	21170	24826
Khulna City Corporation	0	0	0	0	2	0	49	51	9387	37596	46983
Khulna Division	0	0	0	0	2	0	49	51	9387	37596	46983
Barisal City Corporation	0	0	0	0	0	0	1	1	932	4715	5647
Barisal Division	0	0	0	0	0	0	1	1	932	4715	5647
Dhaka City Corporation	0	0	0	0	0	0	22	22	11901	67860	79761
Gazipur City Corporation	0	0	0	0	0	0	60	60	3449	15707	19156
Narayanganj City Corporation	0	0	0	0	0	0	70	70	75	1505	1580
Dhaka Division	0	0	0	0	0	0	152	152	15425	85072	100497
Chittagong City Corporation	0	0	0	0	0	0	26	26	6197	28662	34859
Comilla City Corporation	0	0	0	0	0	0	0	0	656	5234	5890
Chittagong Division	0	0	0	0	0	0	26	26	6853	33896	40749
Sylhet City Corporation	0	0	0	0	0	0	11	11	59	422	481
Sylhet Division	0	0	0	0	0	0	11	11	59	422	481
Total	13221	0	0	0	2	1	324	327	39955	192449	232404



পরিবার পরিকল্পনা অধিদপ্তর
স্বাস্থ্য ও পরিবার কল্যাণ মন্ত্রণালয়